

# PROJECTS

# PRODUCT

# RANGE 2025

Sanitary Systems

Sanitary Systems

# SANITARY MODULES

Sanitary Modules



Sanitary Systems

# TECEbox BRICK-WALL MODULES

Sanitary Modules



**TECEbox toilet module with Base cistern, installation height 1060 mm****Article number:** 9470401**DU 1:** 1 pc.**DU 2:** 10 pc.**Description:**

Toilet module including “easy fit” flush plate installation. For bricked-in pre-wall installation in front of a solid wall.

Base cistern for front actuation:

- Safety tank made of impact-resistant plastic, tested to EN 14055
- Cistern fully pre-assembled
- Cistern connection with outer thread R 1/2" at the top, compatible with quick adapters
- 3-way stop valve; shut-off valve with flush function with installed filling valve
- 10 litre tank volume; 6 litre pre-set standard flush volume, 4.5/7.5/9-litre flush volume can be set at any time; 3-litre partial flush volume for dual-flush system; remaining volume can be used for immediate cleaning flush.
- Insulated against condensation water
- Can be used as a single or dual-flush cistern
- For TECE flush plates and toilet flush handle
- “easy fit” flush plate installation
- Low-noise hydraulic filling valve, fitting group 1 according to DIN 4109

Module frame:

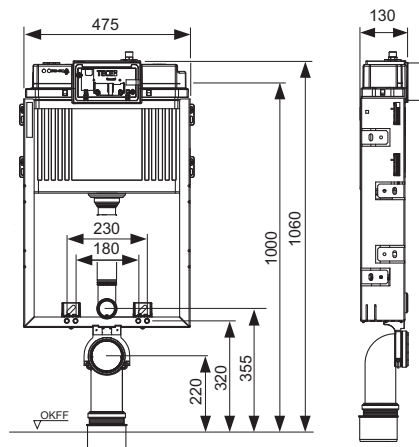
- Steel frame, galvanised
- Two M 12 retaining bolts and M 12 nuts, 180 mm installation spacing
- Toilet drain bend DN 90 with joint adapter DN 90/100, made of PP
- DN 90 toilet connection set including protective plug

**Please order separately:**

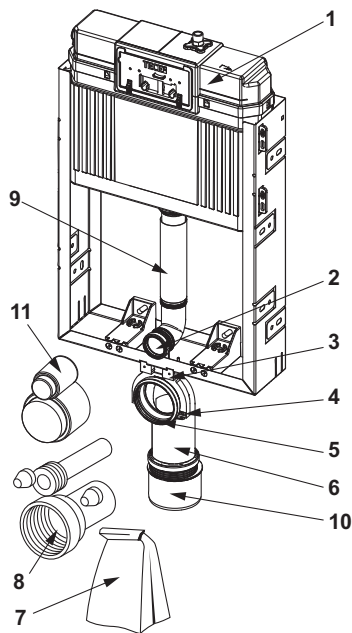
- Toilet flush plate (see flush plates)
- Insert chute for cleaning tablets (optional)
- TECE upgrade set brick-wall for TECE shower toilets (optional)

**Sales data:**

Product name: TECEbox toilet module with Base cistern, installation height 1060 mm  
Commodity group: 910  
Product group: 2009100010



## Spare parts:

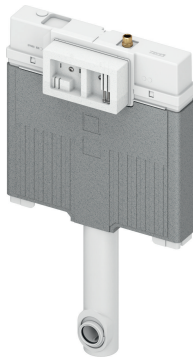


- |    |         |  |
|----|---------|--|
| 1  | 9820466 | Base cistern "open", complete                                    |
| 2  | 9820015 | Flush pipe seal  |
| 3  | 9820048 | Toilet drain bend holder   |
|    | 9820049 | Bracket toilet drain bend holder                                 |
| 5  | 9820139 | Seal for drain bend DN 90  |
| 6  | 9820135 | Toilet drain bend DN 90 (PP)                                     |
| 7  | 9820051 | By-pack for brick-wall-mounted cistern (mounting material, etc.) |
| 8  | 9820057 | Toilet connection set, DN 90                                     |
| 9  | 9820011 | Flush pipe with O-ring, length 269 mm, dry-wall construction     |
| 10 | 9820136 | Toilet connector, DN 90/100, PP                                  |
| 11 | 9820312 | Bare wall toilet plug for flush pipe and drain bend              |

Sanitary Systems

# TECEbox Base 8cm BRICK-WALL MODULES

Sanitary Modules



**TECEbox Base 8 cistern, 8 cm, for floor-standing toilet, installation height 1075 mm**

**Article number:** 9370550

**DU 1:** 1 pc.

**DU 2:** 10 pc.

**Description:**

TECEbox Base 8 cistern for floor-standing toilet; installation depth 8 cm; for installation in or in front of a solid wall.

TECEbox Base 8 cistern 8 cm for actuation from the front:

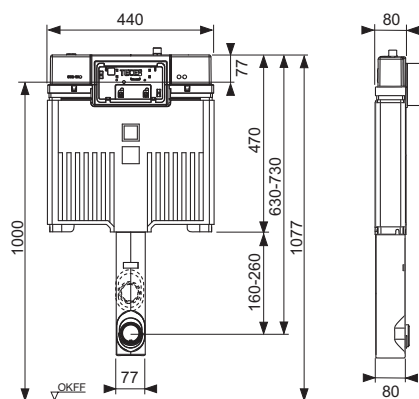
- Safety tank made of impact-resistant plastic, tested according to EN 14055
- Cistern completely pre-assembled
- Cistern connection with outer thread R 1/2" at the top, compatible with quick-action adapters
- 7 litre tank volume; 6 litre preset standard flush volume; 4.5 litre flush volume adjustable at any time; 3 litre partial flush with dual-flush system; setting of a 4/2 litre flush volume optionally possible.
- Insulated against condensation water
- For TECE flush plates and toilet flush handle
- Can be used as single or dual-flush cistern
- Low-noise hydraulic filling valve, acoustic group 1 in accordance with DIN 4109

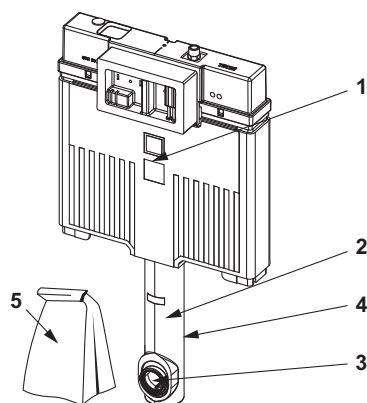
**Sales data:**

Product name: TECEbox Base 8 cistern, 8 cm, for floor-standing toilet, installation height 1075 mm

Commodity group: 910

Product group: 2009100010



**Spare parts:**

- |   |         |  |
|---|---------|--|
| 1 | 9820665 | Base 8 cistern   |
| 2 | 9820668 | Flush pipe for cisterns                                  |
| 3 | 9820015 | Flush pipe seal  |
| 4 | 9820143 | Flush pipe polystyrene protection for Octa cistern, 8 cm |
| 5 | 9820144 | By-pack for Octa cistern, 8 cm (mounting material, etc.) |



**TECEbox toilet module with Base 8 cistern, 8 cm, for wall-mounted toilet, installation height 1075 mm****Article number:** 9370551**DU 1:** 1 pc.**DU 2:** 10 pc.**Description:**

TECEbox with Base 8 cistern for wall-mounted toilet; installation depth 8 cm; for installation in or in front of a solid wall.

Base 8 cistern 8 cm for actuation from the front:

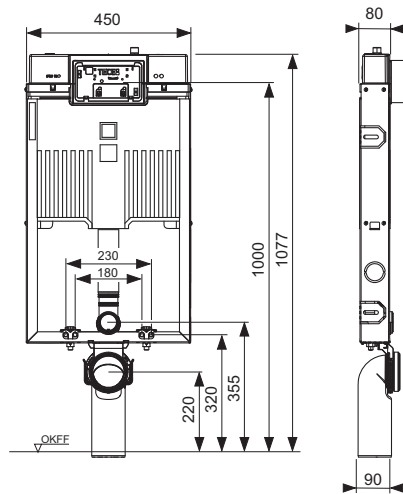
- Safety tank made of impact-resistant plastic, tested according to EN 14055
- Cistern completely pre-assembled
- Cistern connection with outer thread R 1/2" at the top, compatible with quick-action adapters
- 7 litre tank volume; 6 litre preset standard flush volume; 4.5 litre flush volume adjustable at any time; 3 litre partial flush with dual-flush system; setting of a 4/2 litre flush volume optionally possible.
- Insulated against condensation water
- For TECE flush plates and toilet flush handle
- Can be used as single or dual-flush cistern
- Low-noise hydraulic filling valve, acoustic group 1 in accordance with DIN 4109

Module frame:

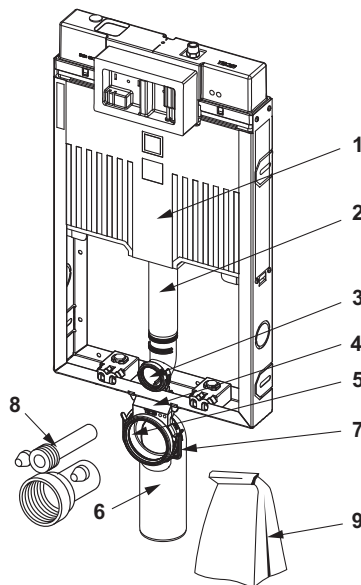
- Steel frame, galvanised
- Two M 12 retaining bolts and nuts, installation spacing 180 or 230 mm
- Toilet drain bend DN 90 made of PE-HD
- Toilet connection set DN 90, including building protection plug

**Sales data:**

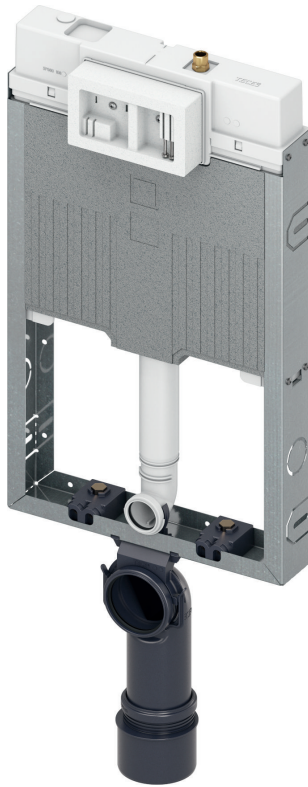
Product name:	TECEbox toilet module with Base 8 cistern, 8 cm, for wall-mounted toilet, installation height 1075 mm
Commodity group:	910
Product group:	2009100010



## Spare parts:



- |   |         |   |
|---|---------|---|
| 1 | 9820665 | Base 8 cistern  |
| 2 | 9820668 | Flush pipe for cisterns   |
| 3 | 9820015 | Flush pipe seal   |
| 4 | 9820256 | Drain bend holder for Octa cistern, 8 cm                                    |
| 5 | 9820139 | Seal for drain bend DN 90   |
| 6 | 9820150 | Toilet drain bend DN 90/90 PE-HD, for cisterns 8 cm                         |
| 7 | 9820042 | Bracket for toilet drain bend holder  |
| 8 | 9820057 | Toilet connection set, DN 90  |
| 9 | 9820147 | By-pack for toilet module with Octa cistern, 8 cm (mounting material, etc.) |

**TECEbox toilet module with Base 8 cistern, 8 cm, for wall-mounted toilet, installation height 1075 mm****Article number:** 9370552**DU 1:** 1 pc.**DU 2:** 10 pc.**Description:**

TECEbox with Base 8 cistern for wall-mounted toilet; installation depth 8 cm; for installation in or in front of a solid wall.

Base 8 cistern 8 cm for actuation from the front:

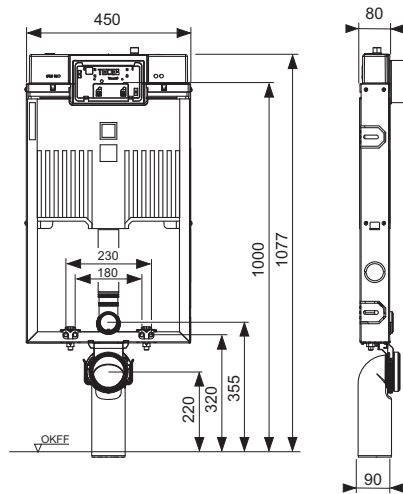
- Safety tank made of impact-resistant plastic, tested according to EN 14055
- Cistern completely pre-assembled
- Cistern connection with outer thread R 1/2" at the top, compatible with quick-action adapters
- 7 litre tank volume; 4.5 litre preset standard flush volume; 6 litre flush volume adjustable at any time; 3 litre partial flush with dual-flush system; setting of a 4/2 litre flush volume optionally possible.
- Insulated against condensation water
- For TECE flush plates and toilet flush handle
- Can be used as single or dual-flush cistern
- Low-noise hydraulic filling valve, acoustic group 1 in accordance with DIN 4109

Module frame:

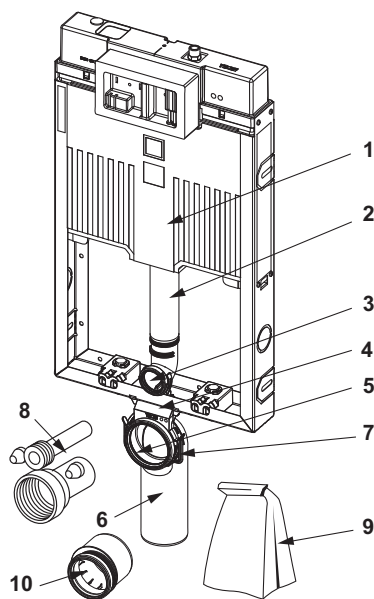
- Steel frame, galvanised
- Two M 12 retaining bolts and nuts, installation spacing 180 or 230 mm
- Toilet drain bend DN 90 made of PE-HD
- Toilet connection set DN 90, including building protection plug
- Includes PP DN 90/100 joint adapter

**Sales data:**

Product name:	TECEbox toilet module with Base 8 cistern, 8 cm, for wall-mounted toilet, installation height 1075 mm
Commodity group:	903
Product group:	2009030070



## Spare parts:



- |    |         |   |
|----|---------|---|
| 1  | 9820665 | Base 8 cistern  |
| 2  | 9820668 | Flush pipe for cisterns   |
| 3  | 9820015 | Flush pipe seal   |
| 4  | 9820256 | Drain bend holder for Octa cistern, 8 cm                                    |
| 5  | 9820139 | Seal for drain bend DN 90   |
| 6  | 9820150 | Toilet drain bend DN 90/90 PE-HD, for cisterns 8 cm                         |
| 7  | 9820042 | Bracket for toilet drain bend holder  |
| 8  | 9820057 | Toilet connection set, DN 90  |
| 9  | 9820147 | By-pack for toilet module with Octa cistern, 8 cm (mounting material, etc.) |
| 10 | 9820136 | Toilet connector, DN 90/100, PP   |

Sanitary Systems

# TECEbase DRY-WALL MODULES

Sanitary Modules



**TECEbase toilet module with Base 320 cistern, installation height 1120 mm****Article number:** 9400440**DU 1:** 1 pc.**DU 2:** 15 pc.**DU 3:** 30 pc.**Description:**

Toilet module for single block assembly, suitable as a pre-wall module in front of solid walls and for installation in metal or wooden stud walls.

Base 320 cistern for operation from the front:

- Safety tank made of impact-resistant plastic, tested according to EN 14055
- Cistern completely pre-assembled
- Cistern connection with R 1/2" outer thread from above, compatible with quick-action adapters
- 3-way corner valve; shut-off valve with flush function when filling valve is fitted
- 7 litre tank volume; 6 litre preset standard flush volume; 4.5 litre flush volume adjustable at any time; 3 litre partial flush with dual-flush system; setting of a 4/2 litre flush volume optionally possible. Remaining volume can be used for immediate cleaning flush.
- Insulated against condensation water
- For TECE flush plates and toilet flush handle
- Can be used as a single or dual-flush cistern
- Low-noise hydraulic filling valve, acoustic group 1 according to DIN 4109

Module frame:

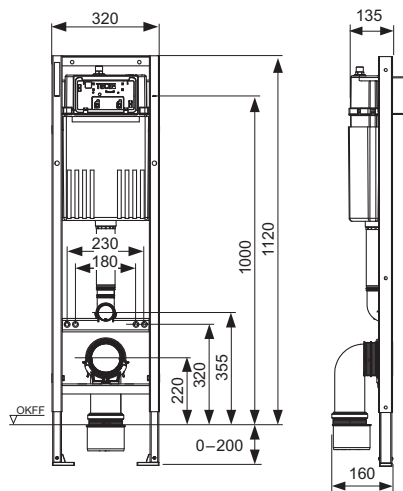
- Self-supporting, powder-coated
- Two M 12 retaining bolts and nuts
- Toilet drain bend DN 90 incl. joint adapter DN 90/100 made of PP
- Joint adapter also suitable for horizontal installation
- Toilet connection set DN 90, including building protection plug
- Mounting set for solid walls

**Please order separately:**

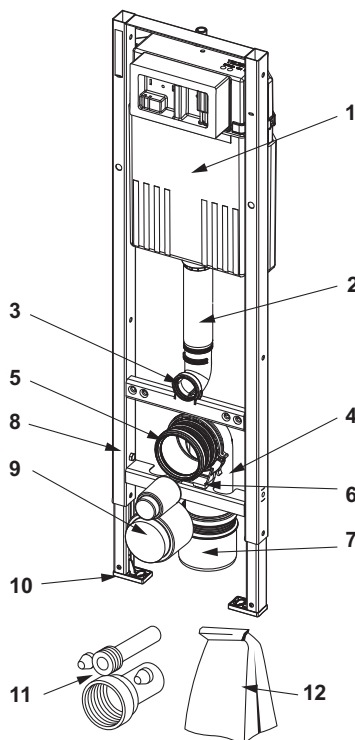
- Toilet flush plate (see Flush Plates)
- TECE upgrade set 320 dry-wall for TECE shower toilets (optional)

**Sales data:**

Product name: TECEbase toilet module with Base 320 cistern, installation height 1120 mm  
Commodity group: 910  
Product group: 2009100010



## Spare parts:



- |    |         |  |
|----|---------|--|
| 1  | 9820108 | Base 320 cistern   |
| 2  | 9820668 | Flush pipe for cisterns  |
| 3  | 9820015 | Flush pipe seal  |
| 4  | 9820134 | Toilet drain bend DN 90 (PP)   |
| 5  | 9820139 | Seal for drain bend DN 90  |
| 6  | 9820348 | Toilet drain bend holder complete, mounting on cross-beam at bottom (from 04/2017) |
| 7  | 9820136 | Toilet connector, DN 90/100, PP  |
| 8  | 9820447 | Foot brake with steel spring   |
| 9  | 9820312 | Bare wall toilet plug for flush pipe and drain bend                                |
| 10 | 9820239 | Module foot made of plastic (1 pc.)  |
| 11 | 9820057 | Toilet connection set, DN 90   |
| 12 | 9820494 | By-pack  |

**TECEbase toilet module with Base cistern, installation height 1120 mm****Article number:** 9400401**DU 1:** 1 pc.**DU 2:** 10 pc.**DU 3:** 60 pc.**Description:**

Toilet module including “easy fit” flush plate installation. For single block assembly, as a pre-wall module in front of solid walls, and for incorporation into metal or wooden stud walls.

Base cistern for front actuation:

- Safety tank made of impact-resistant plastic, tested to EN 14055
- Cistern fully pre-assembled
- Cistern connection with outer thread R 1/2" at the top, compatible with quick adapters
- 3-way stop valve; shut-off valve with flush function with installed filling valve
- 10 litre tank volume; 6 litre pre-set standard flush volume, 4.5/7.5/9-litre flush volume can be set at any time; 3-litre partial flush volume for dual-flush system; remaining volume can be used for immediate cleaning flush.
- Insulated against condensation water
- For TECE flush plates and toilet flush handle
- Can be used as a single or dual-flush cistern
- “easy fit” flush plate installation
- Low-noise hydraulic filling valve, fitting group 1 according to DIN 4109

Module frame:

- Self-supporting, powder-coated
- Two M 12 retaining bolts and nuts
- Mounting set for solid walls
- Toilet drain bend DN 90 with joint adapter DN 90/100, made of PP
- Joint adapter also suitable for horizontal installation
- DN 90 toilet connection set including protective plug

**Please order separately:**

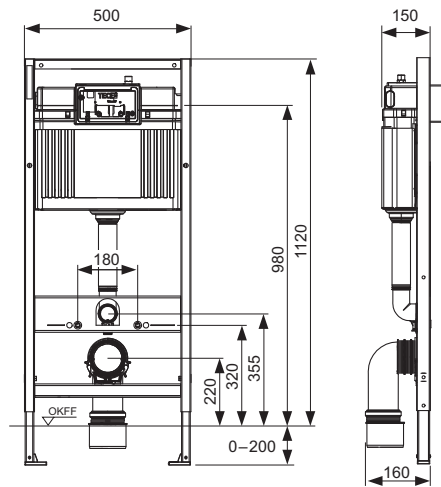
- Toilet flush plate (see flush plates)
- Insert chute for cleaning tablets (optional)
- TECE upgrade set dry-wall for TECE shower toilets (optional)
- Shell structure/fine installation set to connect an electronic shower toilet

**Note:**

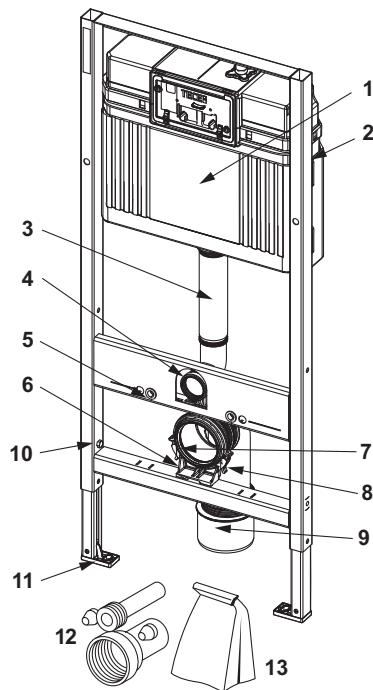
If toilet ceramics with a reduced supporting surface are used (= distance from middle of fixing bolt to lower edge of supporting surface is not larger than 18 cm) - e.g. V & B Memento, Sentique, Subway 2.0 - it is necessary to install the steel brace set 9041029 in the lower build space.

**Sales data:**

Product name: TECEbase toilet module with Base cistern, installation height 1120 mm  
Commodity group: 910  
Product group: 2009100010



## Spare parts:



- |    |         |  |
|----|---------|--|
| 1  | 9820466 | Base cistern "open", complete  |
| 2  | 9820040 | Assembly kit for Uni cistern   |
| 3  | 9820011 | Flush pipe with O-ring, length 269 mm, dry-wall construction                       |
| 4  | 9820015 | Flush pipe seal  |
| 5  | 9820071 | Clinch nut   |
| 6  | 9820348 | Toilet drain bend holder complete, mounting on cross-beam at bottom (from 04/2017) |
| 7  | 9820139 | Seal for drain bend DN 90  |
| 8  | 9820134 | Toilet drain bend DN 90 (PP)   |
| 9  | 9820136 | Toilet connector, DN 90/100, PP  |
| 10 | 9820072 | Foot brake   |
| 11 | 9820239 | Module foot made of plastic (1 pc.)  |
| 12 | 9820057 | Toilet connection set, DN 90   |
| 13 | 9820494 | By-pack  |

**TECEbase toilet module with Base cistern, installation height 1120 mm****Article number:** 9400408**DU 1:** 1 pc.**DU 2:** 10 pc.**Description:**

Toilet module including “easy fit” flush plate installation. For single block assembly, as a pre-wall module in front of solid walls, and for incorporation into metal or wooden stud walls.

Base cistern for front actuation:

- Safety tank made of impact-resistant plastic, tested to EN 14055
- Cistern fully pre-assembled
- Cistern connection with outer thread R 1/2" at the top, compatible with quick adapters
- 3-way stop valve; shut-off valve with flush function with installed filling valve
- 10 litre tank volume; 6 litre pre-set standard flush volume, 4.5/7.5/9-litre flush volume can be set at any time; 3-litre partial flush volume for dual-flush system; remaining volume can be used for immediate cleaning flush.
- Insulated against condensation water
- For TECE flush plates and toilet flush handle
- Can be set as a single or dual-flush cistern
- “easy fit” flush plate installation
- Low-noise hydraulic filling valve, fitting group 1 according to DIN 4109

Module frame:

- Self-supporting, powder-coated
- Two M 12 retaining bolts and nuts
- Mounting set for solid walls
- Toilet drain bend DN 90 with joint adapter DN 90/100, made of PP
- Joint adapter also suitable for horizontal installation
- DN 90 toilet connection set including protective plug

**Please order separately:**

- Toilet flush plate (see flush plates)
- Insert chute for cleaning tablets (optional)
- TECE upgrade set dry-wall for TECE shower toilets (optional)
- Shell structure/fine installation set to connect an electronic shower toilet

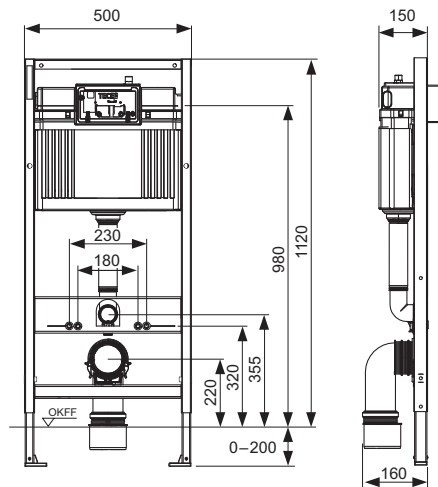
**Note:**

If toilet ceramics with a reduced supporting surface are used (= distance from middle of fixing bolt to lower edge of supporting surface is not larger than 18 cm) - e.g. V & B Memento, Sentique, Subway 2.0 - it is necessary to install the steel brace set 9041029 in the lower build space.

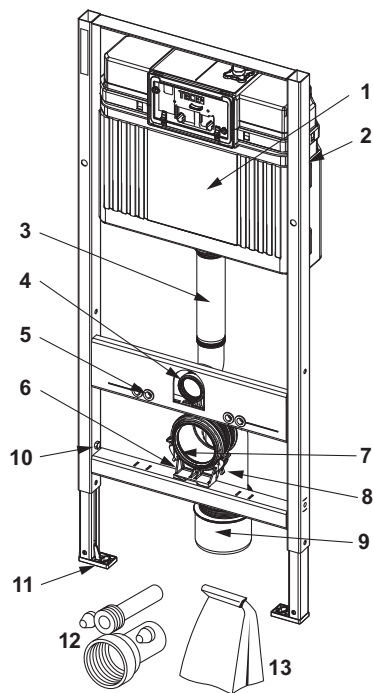
**Sales data:**

Product name: TECEbase toilet module with Base cistern, installation height 1120 mm  
Commodity group: 910  
Product group: 2009100010





## Spare parts:



- |    |         |  |
|----|---------|--|
| 1  | 9820466 | Base cistern "open", complete  |
| 2  | 9820040 | Assembly kit for Uni cistern   |
| 4  | 9820015 | Flush pipe seal  |
| 5  | 9820071 | Clinch nut   |
| 6  | 9820348 | Toilet drain bend holder complete, mounting on cross-beam at bottom (from 04/2017) |
| 7  | 9820139 | Seal for drain bend DN 90  |
| 8  | 9820134 | Toilet drain bend DN 90 (PP)   |
| 9  | 9820136 | Toilet connector, DN 90/100, PP  |
| 10 | 9820072 | Foot brake   |
| 11 | 9820239 | Module foot made of plastic (1 pc.)  |
| 12 | 9820057 | Toilet connection set, DN 90   |
| 13 | 9820494 | By-pack  |
| 33 | 9820011 | Flush pipe with O-ring, length 269 mm, dry-wall construction                       |

**TECEbase toilet set with Base cistern, including TECEbase toilet flush plate in white, installation height 1120 mm****Article number:** 9400400**DU 1:** 1 pc.**DU 2:** 10 pc.**DU 3:** 60 pc.**Description:**

Toilet module for single block mounting, as a pre-wall module in front of solid walls, and for incorporation into metal or wooden stud walls.

Base cistern for front actuation:

- Safety tank made of impact-resistant plastic, tested to EN 14055
- Cistern fully pre-assembled
- Cistern connection with R 1/2" outer thread at the top, compatible with quick adapters
- 3-way stop valve; shut-off valve with flush function with installed filling valve
- 10 litre tank volume; 6 litre pre-set standard flush volume, 4.5/7.5/9-litre flush volume can be set at any time; 3-litre partial flush volume for dual-flush system; remaining volume can be used for immediate cleaning flush. Setting a 4/2 litre flush volume by lowering the water level is optionally possible.
- Insulated against condensation water
- Low-noise hydraulic filling valve, fitting group 1 according to DIN 4109

Module frame:

- Self-supporting, powder-coated
- Two M 12 retaining bolts and nuts
- Mounting set for solid walls
- Toilet drain bend DN 90 with joint adapter DN 90/100, made of PP
- Joint adapter also suitable for horizontal installation
- DN 90 toilet connection set including protective plug
- TECEbase dual-flush plate in white

**Please order separately:**

- TECE upgrade set dry-wall for TECE shower toilets (optional)
- Shell structure/fine installation set to connect an electronic shower toilet

**Caution:**

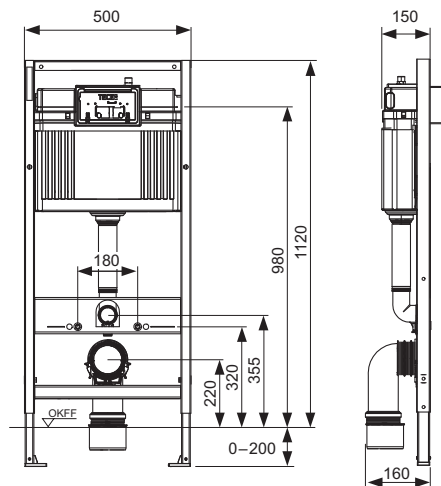
Only the TECEbase flush plate supplied may be mounted. Other flush plates or toilet flush handles are not compatible.

**Note:**

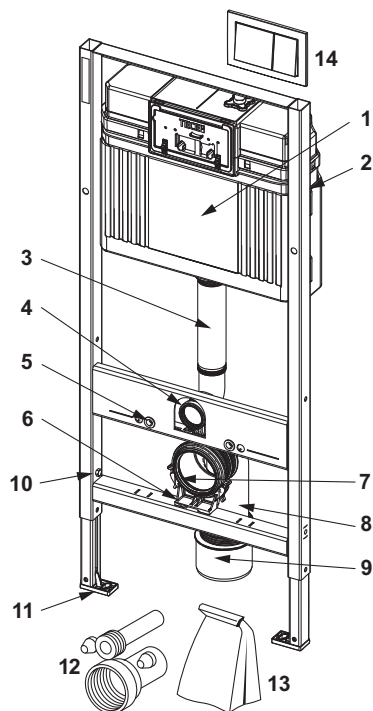
If toilet ceramics with a reduced supporting surface are used (= distance from middle of fixing bolt to lower edge of supporting surface is not larger than 18 cm) - e.g. V & B Memento, Subway 2.0 - it is necessary to install the steel brace set 9041029 in the lower build space.

## Sales data:

Product name:	TECEbase toilet set with Base cistern, including TECEbase white toilet flush plate, installation height 1120 mm
Commodity group:	910
Product group:	2009100010



## Spare parts:



1	9820467	Base cistern "closed", complete
2	9820040	Assembly kit for Uni cistern
3	9820011	Flush pipe with O-ring, length 269 mm, dry-wall construction
4	9820015	Flush pipe seal
5	9820071	Clinch nut
6	9820348	Toilet drain bend holder complete, mounting on cross-beam at bottom (from 04/2017)
7	9820139	Seal for drain bend DN 90
8	9820134	Toilet drain bend DN 90 (PP)
9	9820136	Toilet connector, DN 90/100, PP
10	9820072	Foot brake
11	9820239	Module foot made of plastic (1 pc.)
12	9820057	Toilet connection set, DN 90
13	9820494	By-pack
14	9240700	TECEbase flush plate dual-flush, polished white

**TECEbase toilet module with Base cistern, including TECEambia bright chrome toilet flush plate, installation height 1120 mm****Article number:** 9400405**DU 1:** 1 pc.**DU 2:** 10 pc.**DU 3:** 60 pc.**Description:**

Toilet module including “easy fit” flush plate installation. For single block assembly, as a pre-wall module in front of solid walls, and for incorporation into metal or wooden stud walls.

Base cistern for front actuation:

- Safety tank made of impact-resistant plastic, tested to EN 14055
- Cistern fully pre-assembled
- Cistern connection with outer thread R 1/2" at the top, compatible with quick adapters
- 3-way stop valve; shut-off valve with flush function with installed filling valve
- 10 litre tank volume; 6 litre pre-set standard flush volume, 4.5/7.5/9-litre flush volume can be set at any time; 3-litre partial flush volume for dual-flush system; remaining volume can be used for immediate cleaning flush.
- Insulated against condensation water
- “easy fit” flush plate installation
- Low-noise hydraulic filling valve, fitting group 1 according to DIN 4109

Module frame:

- Self-supporting, powder-coated
- Two M 12 retaining bolts and nuts
- Four rivet nuts for installation spacing 180 mm or 230 mm
- Mounting set for solid walls
- Toilet drain bend DN 90 with joint adapter DN 90/100, made of PP
- Joint adapter also suitable for horizontal installation
- DN 90 toilet connection set including protective plug
- TECEambia dual-flush plate in bright chrome
- Toilet sound insulation set

**Please order separately:**

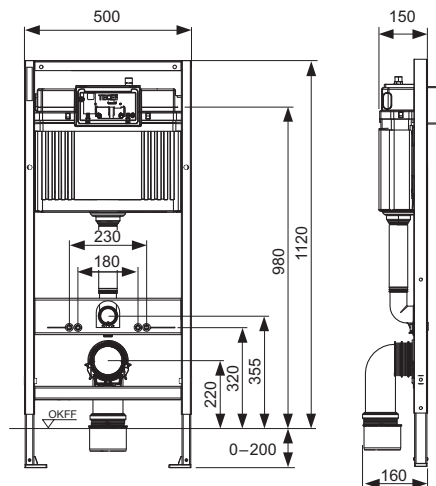
- Insert chute for cleaning tablets (optional)
- TECE upgrade set dry-wall for TECE shower toilets (optional)
- Shell structure/fine installation set to connect an electronic shower toilet

**Note:**

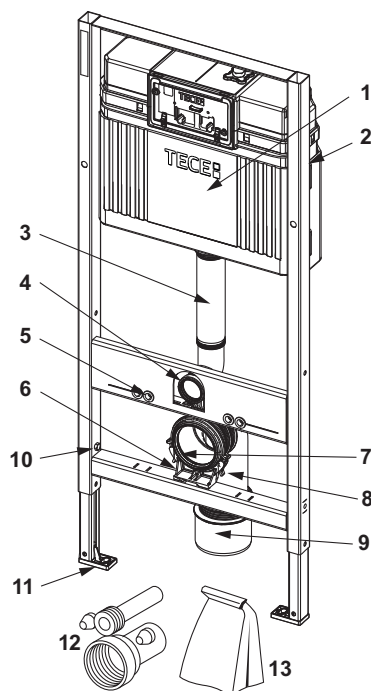
If toilet ceramics with a reduced supporting surface are used (= distance from middle of fixing bolt to lower edge of supporting surface is not larger than 18 cm) - e.g. V & B Memento, Sentique, Subway 2.0 - it is necessary to install the steel brace set 9041029 in the lower build space.

## Sales data:

Product name:	TECEbase toilet module with Base cistern, including TECEambia bright chrome toilet flush plate, installation height 1120 mm
Commodity group:	910
Product group:	2009100010



## Spare parts:



- |    |         |  |
|----|---------|--|
| 1  | 9820466 | Base cistern "open", complete  |
| 2  | 9820040 | Assembly kit for Uni cistern   |
| 3  | 9820011 | Flush pipe with O-ring, length 269 mm, dry-wall construction                       |
| 4  | 9820015 | Flush pipe seal  |
| 5  | 9820071 | Clinch nut   |
| 6  | 9820348 | Toilet drain bend holder complete, mounting on cross-beam at bottom (from 04/2017) |
| 7  | 9820139 | Seal for drain bend DN 90  |
| 8  | 9820134 | Toilet drain bend DN 90 (PP)   |
| 9  | 9820136 | Toilet connector, DN 90/100, PP  |
| 10 | 9820072 | Foot brake   |
| 11 | 9820239 | Module foot made of plastic (1 pc.)  |
| 12 | 9820057 | Toilet connection set, DN 90   |
| 13 | 9820494 | By-pack  |



**TECEbase toilet module with Base cistern, including TECEbase bright chrome toilet flush plate, installation height 1120 mm**

Article number: 9400406

DU 1: 1 pc.

DU 2: 10 pc.

DU 3: 60 pc.

**Description:**

Toilet module for single block mounting, as a pre-wall module in front of solid walls, and for incorporation into metal or wooden stud walls.

Base cistern for front actuation:

- Safety tank made of impact-resistant plastic, tested to EN 14055
- Cistern fully pre-assembled
- Cistern connection with outer thread R 1/2" at the top, compatible with quick adapters
- 3-way stop valve; shut-off valve with flush function with installed filling valve
- 10 litre tank volume; 6 litre pre-set standard flush volume, 4.5/7.5/9-litre flush volume can be set at any time; 3-litre partial flush volume for dual-flush system; remaining volume can be used for immediate cleaning flush.
- Insulated against condensation water
- Low-noise hydraulic filling valve, fitting group 1 according to DIN 4109

Module frame:

- Self-supporting, powder-coated
- Two M 12 retaining bolts and nuts
- Four rivet nuts for installation spacing 180 mm or 230 mm
- Mounting set for solid walls
- Toilet drain bend DN 90 with joint adapter DN 90/100, made of PP
- Joint adapter also suitable for horizontal installation
- DN 90 toilet connection set including protective plug
- TECEbase dual-flush plate in bright chrome
- Toilet sound insulation set

**Please order separately:**

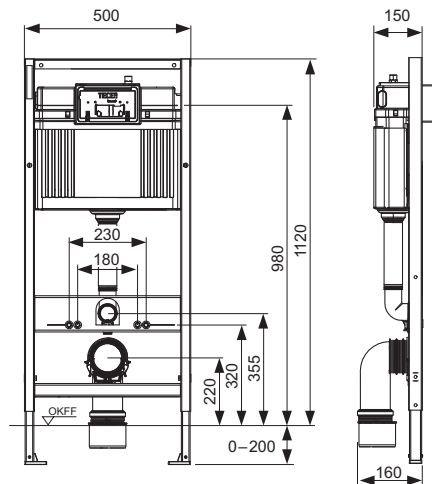
- TECE upgrade set dry-wall for TECE shower toilets (optional)
- Shell structure/fine installation set to connect an electronic shower toilet

**Note:**

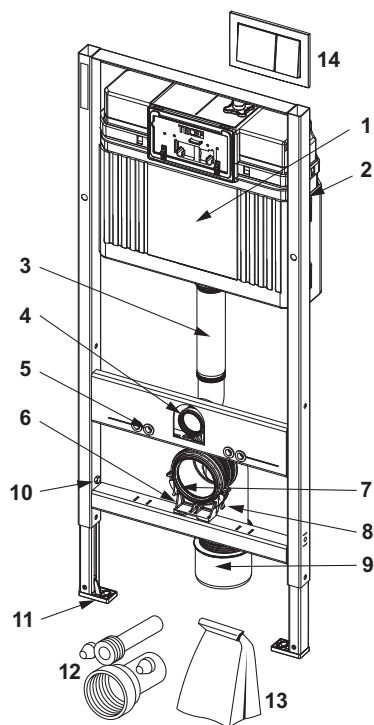
If toilet ceramics with a reduced supporting surface are used (= distance from middle of fixing bolt to lower edge of supporting surface is not larger than 18 cm) - e.g. V & B Memento, Sentique, Subway 2.0 - it is necessary to install the steel brace set 9041029 in the lower build space.

**Sales data:**

Product name:	TECEbase toilet module with Base cistern, including TECEbase bright chrome toilet flush plate, installation height 1120 mm
Commodity group:	910
Product group:	2009100010



## Spare parts:



- |    |         |  |
|----|---------|--|
| 1  | 9820467 | Base cistern "closed", complete  |
| 2  | 9820040 | Assembly kit for Uni cistern   |
| 3  | 9820011 | Flush pipe with O-ring, length 269 mm, dry-wall construction                       |
| 4  | 9820015 | Flush pipe seal  |
| 5  | 9820071 | Clinch nut   |
| 6  | 9820348 | Toilet drain bend holder complete, mounting on cross-beam at bottom (from 04/2017) |
| 7  | 9820139 | Seal for drain bend DN 90  |
| 8  | 9820134 | Toilet drain bend DN 90 (PP)   |
| 9  | 9820136 | Toilet connector, DN 90/100, PP  |
| 10 | 9820072 | Foot brake   |
| 11 | 9820239 | Module foot made of plastic (1 pc.)  |
| 12 | 9820057 | Toilet connection set, DN 90   |
| 13 | 9820494 | By-pack  |
| 14 | 9240701 | TECEbase flush plate dual-flush, bright chrome                                     |



**TECEbase toilet module with Base cistern including TECEnow bright chrome toilet flush plate, front actuated, installation height 1120 mm**

Article number: 9400412

DU 1: 1 pc.

DU 2: 10 pc.

DU 3: 60 pc.

#### Description:

Toilet module including “easy fit” flush plate installation. For single block assembly, as a pre-wall module in front of solid walls, and for incorporation into metal or wooden stud walls.

Base cistern for front actuation:

- Safety tank made of impact-resistant plastic, tested to EN 14055
- Cistern fully pre-assembled
- Cistern connection with outer thread R 1/2" at the top, compatible with quick adapters
- 3-way stop valve; shut-off valve with flush function with installed filling valve
- 10 litre tank volume; 6 litre pre-set standard flush volume, 4.5/7.5/9-litre flush volume can be set at any time; 3-litre partial flush volume for dual-flush system; remaining volume can be used for immediate cleaning flush.
- Insulated against condensation water
- “easy fit” flush plate installation
- Low-noise hydraulic filling valve, fitting group 1 according to DIN 4109

Module frame:

- Self-supporting, powder-coated
- Two M 12 retaining bolts and nuts
- Mounting set for solid walls
- Toilet drain bend DN 90 with joint adapter DN 90/100, made of PP
- Joint adapter also suitable for horizontal installation
- DN 90 toilet connection set including protective plug
- Toilet sound insulation set
- TECEnow dual-flush plate bright chrome

**Please order separately:**

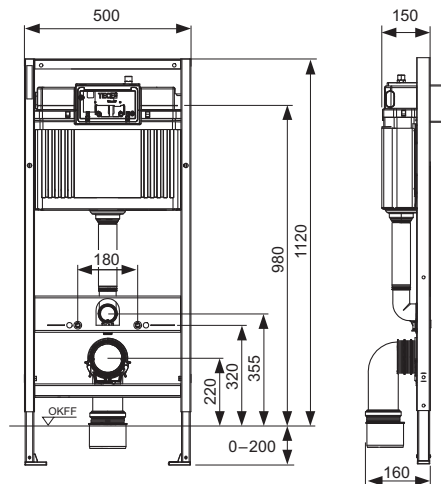
- Insert chute for cleaning tablets (optional)
- TECE upgrade set dry-wall for TECE shower toilets (optional)
- Shell structure/fine installation set to connect an electronic shower toilet

#### Note:

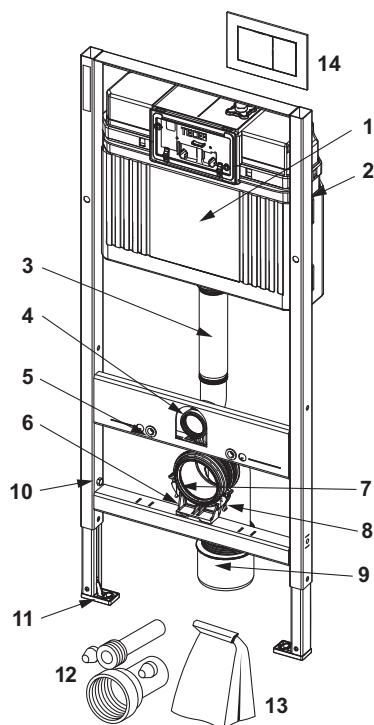
If toilet ceramics with a reduced supporting surface are used (= distance from middle of fixing bolt to lower edge of supporting surface is not larger than 18 cm) - e.g. V & B Memento, Sentique, Subway 2.0 - it is necessary to install the steel brace set 9041029 in the lower build space.

#### Sales data:

Product name:	TECEbase toilet module with Base cistern, including TECEnow bright chrome toilet flush plate, installation height 1120 mm
Commodity group:	910
Product group:	2009100010



## Spare parts:



- |    |         |  |
|----|---------|--|
| 1  | 9820466 | Base cistern "open", complete  |
| 2  | 9820040 | Assembly kit for Uni cistern   |
| 3  | 9820011 | Flush pipe with O-ring, length 269 mm, dry-wall construction                       |
| 4  | 9820015 | Flush pipe seal  |
| 5  | 9820071 | Clinch nut   |
| 6  | 9820348 | Toilet drain bend holder complete, mounting on cross-beam at bottom (from 04/2017) |
| 7  | 9820139 | Seal for drain bend DN 90  |
| 8  | 9820134 | Toilet drain bend DN 90 (PP)   |
| 9  | 9820136 | Toilet connector, DN 90/100, PP  |
| 10 | 9820072 | Foot brake   |
| 11 | 9820239 | Module foot made of plastic (1 pc.)  |
| 12 | 9820057 | Toilet connection set, DN 90   |
| 13 | 9820494 | By-pack  |
| 14 | 9240401 | TECEnow flush plate dual-flush, bright chrome                                      |

**TECEbase toilet module with Base cistern, including TECEnow flush plate in white, installation height 1120 mm****Article number:** 9400413

**DU 1:** 1 pc.  
**DU 2:** 10 pc.  
**DU 3:** 60 pc.

**Description:**

Toilet module including “easy fit” flush plate installation. For single block assembly, as a pre-wall module in front of solid walls, and for incorporation into metal or wooden stud walls.

Base cistern for front actuation:

- Safety tank made of impact-resistant plastic, tested to EN 14055
- Cistern fully pre-assembled
- Cistern connection with outer thread R 1/2" at the top, compatible with quick adapters
- 3-way stop valve; shut-off valve with flush function with installed filling valve
- 10 litre tank volume; 6 litre pre-set standard flush volume, 4.5/7.5/9-litre flush volume can be set at any time; 3-litre partial flush volume for dual-flush system; remaining volume can be used for immediate cleaning flush.
- Insulated against condensation water
- “easy fit” flush plate installation
- Low-noise hydraulic filling valve, fitting group 1 according to DIN 4109

Module frame:

- Self-supporting, powder-coated
- Two M 12 retaining bolts and nuts
- Mounting set for solid walls
- Toilet drain bend DN 90 with joint adapter DN 90/100, made of PP
- Joint adapter also suitable for horizontal installation
- DN 90 toilet connection set including protective plug
- Toilet sound insulation set
- TECEnow dual-flush plate in white

**Please order separately:**

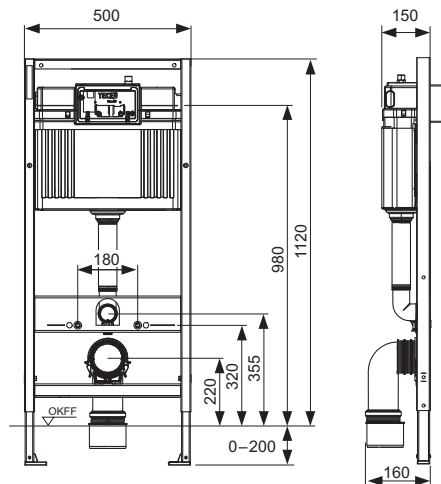
- Insert chute for cleaning tablets (optional)
- TECE upgrade set dry-wall for TECE shower toilets (optional)
- Shell structure/fine installation set to connect an electronic shower toilet

**Note:**

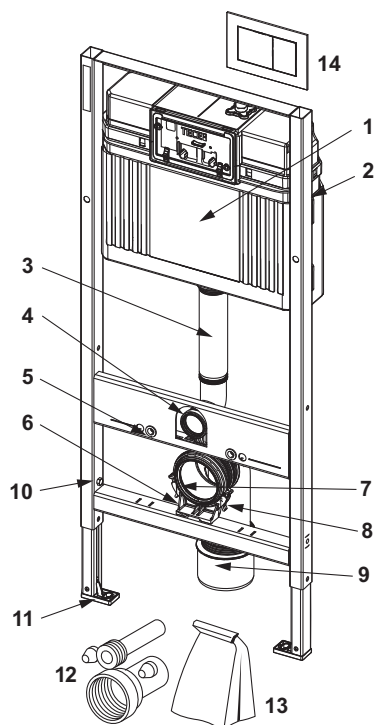
If toilet ceramics with a reduced supporting surface are used (= distance from middle of fixing bolt to lower edge of supporting surface is not larger than 18 cm) - e.g. V & B Memento, Sentique, Subway 2.0 - it is necessary to install the steel brace set 9041029 in the lower build space.

**Sales data:**

Product name:	TECEbase toilet module with Base cistern, including TECEnow white flush plate, installation height 1120 mm
Commodity group:	910
Product group:	2009100010



## Spare parts:



- |    |         |  |
|----|---------|--|
| 1  | 9820466 | Base cistern "open", complete  |
| 2  | 9820040 | Assembly kit for Uni cistern   |
| 3  | 9820011 | Flush pipe with O-ring, length 269 mm, dry-wall construction                       |
| 4  | 9820015 | Flush pipe seal  |
| 5  | 9820071 | Clinch nut   |
| 6  | 9820348 | Toilet drain bend holder complete, mounting on cross-beam at bottom (from 04/2017) |
| 7  | 9820139 | Seal for drain bend DN 90  |
| 8  | 9820134 | Toilet drain bend DN 90 (PP)   |
| 9  | 9820136 | Toilet connector, DN 90/100, PP  |
| 10 | 9820072 | Foot brake   |
| 11 | 9820239 | Module foot made of plastic (1 pc.)  |
| 12 | 9820057 | Toilet connection set, DN 90   |
| 13 | 9820494 | By-pack  |
| 14 | 9240400 | TECEnow flush plate dual-flush, polished white                                     |

**TECEbase toilet module with Base cistern, including TECEnow matt black flush plate, installation height 1120 mm**

Article number: 9400414

DU 1: 1 pc.  
DU 2: 10 pc.  
DU 3: 60 pc.

**Description:**

Toilet module including “easy fit” flush plate installation. For single block assembly, as a pre-wall module in front of solid walls, and for incorporation into metal or wooden stud walls.

Base cistern for front actuation:

- Safety tank made of impact-resistant plastic, tested to EN 14055
- Cistern fully pre-assembled
- Cistern connection with outer thread R 1/2" at the top, compatible with quick adapters
- 3-way stop valve; shut-off valve with flush function with installed filling valve
- 10 litre tank volume; 6 litre pre-set standard flush volume, 4.5/7.5/9-litre flush volume can be set at any time; 3-litre partial flush volume for dual-flush system; remaining volume can be used for immediate cleaning flush.
- Insulated against condensation water
- “easy fit” flush plate installation
- Low-noise hydraulic filling valve, fitting group 1 according to DIN 4109

Module frame:

- Self-supporting, powder-coated
- Two M 12 retaining bolts and nuts
- Mounting set for solid walls
- Toilet drain bend DN 90 with joint adapter DN 90/100, made of PP
- Joint adapter also suitable for horizontal installation
- DN 90 toilet connection set including protective plug
- Toilet sound insulation set
- TECEnow dual-flush plate in matt black

**Please order separately:**

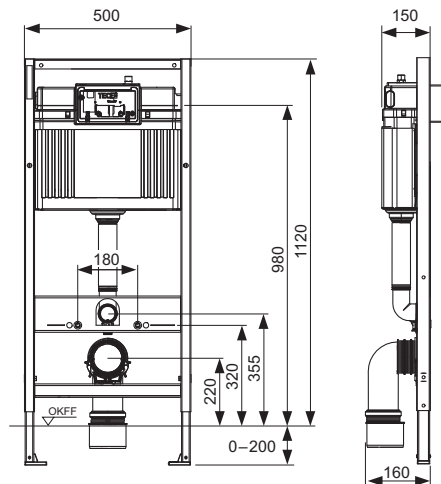
- Insert chute for cleaning tablets (optional)
- TECE upgrade set dry-wall for TECE shower toilets (optional)
- Shell structure/fine installation set to connect an electronic shower toilet

**Note:**

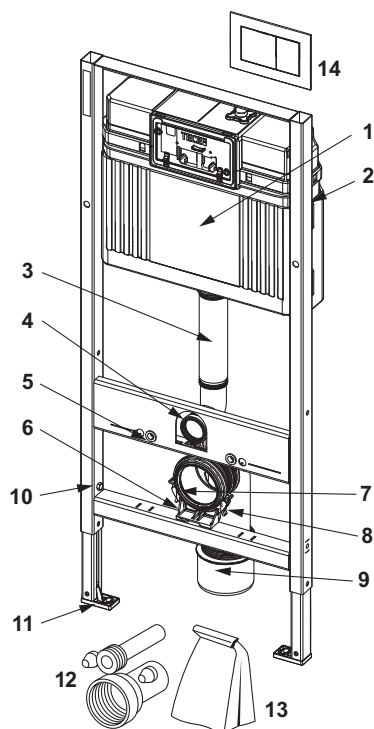
If toilet ceramics with a reduced supporting surface are used (= distance from middle of fixing bolt to lower edge of supporting surface is not larger than 18 cm) - e.g. V & B Memento, Sentique, Subway 2.0 - it is necessary to install the steel brace set 9041029 in the lower build space.

**Sales data:**

Product name:	TECEbase toilet module with Base cistern, including TECEnow matt black flush plate, installation height 1120 mm
Commodity group:	910
Product group:	2009100010



## Spare parts:



- |    |         |  |
|----|---------|--|
| 1  | 9820466 | Base cistern "open", complete  |
| 2  | 9820040 | Assembly kit for Uni cistern   |
| 3  | 9820011 | Flush pipe with O-ring, length 269 mm, dry-wall construction                       |
| 4  | 9820015 | Flush pipe seal  |
| 5  | 9820071 | Clinch nut   |
| 6  | 9820348 | Toilet drain bend holder complete, mounting on cross-beam at bottom (from 04/2017) |
| 7  | 9820139 | Seal for drain bend DN 90  |
| 8  | 9820134 | Toilet drain bend DN 90 (PP)   |
| 9  | 9820136 | Toilet connector, DN 90/100, PP  |
| 10 | 9820072 | Foot brake   |
| 11 | 9820239 | Module foot made of plastic (1 pc.)  |
| 12 | 9820057 | Toilet connection set, DN 90   |
| 13 | 9820494 | By-pack  |
| 14 | 9240407 | TECEnow flush plate dual-flush, matt black   |



**TECEbase toilet set with base cistern, including TECEbase toilet flush plate in matt black, installation height 1120 mm**

Article number: 9400415

DU 1: 1 pc.  
DU 2: 10 pc.  
DU 3: 60 pc.

**Description:**

Toilet module for single block assembly, as a pre-wall module in front of solid walls, and for incorporation into metal or wooden post-and-beam walls.

Base cistern for front actuation:

- Safety tank made of impact-resistant plastic, tested to EN 14055
- Cistern fully pre-assembled
- Cistern connection with R 1/2" outer thread at the top, compatible with quick adapters
- 3-way stop valve; shut-off valve with flush function with installed filling valve
- 10 litre tank volume; 6 litre pre-set standard flush volume, 4.5/7.5/9-litre flush volume can be set at any time; 3-litre partial flush volume for dual-flush system; remaining volume can be used for immediate cleaning flush. Setting a 4/2 litre flush volume by lowering the water level is optionally possible.
- Insulated against condensation water
- Low-noise hydraulic filling valve, fitting group 1 according to DIN 4109

Module frame:

- Self-supporting, powder-coated
- Two M 12 retaining bolts and nuts
- Hanger bolt for solid walls
- Toilet drain bend DN 90 incl. toilet adapter DN 90/100 made of PP
- Joint adapter also suitable for horizontal installation
- Toilet connection set DN 90, includes assembly protection plugs
- TECEbase dual-flush plate in matt black

**Please order separately:**

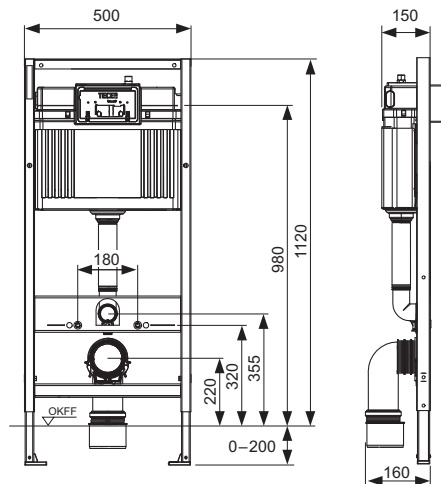
- TECE dry-wall construction upgrade set for TECE shower toilets (optional)
- Shell/fine installation set for connecting an electronic shower toilet

**Note:**

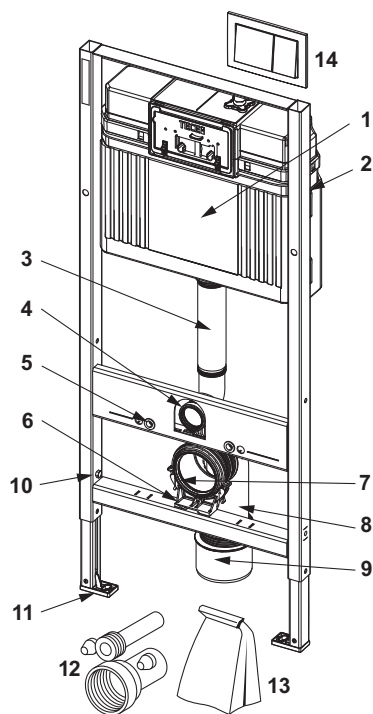
If toilet ceramics with a reduced supporting surface are used (= distance from middle of fixing bolt to lower edge of supporting surface is not greater than 18 cm) - e.g. V & B Memento, Subway 2.0 - the steel brace set 9041029 must be installed in the lower build space.

**Sales data:**

Product name: TECEbase toilet set with base cistern, including TECEbase toilet flush plate in matt black, installation height 1120 mm  
Commodity group: 910  
Product group: 2009100010



## Spare parts:



- |    |         |  |
|----|---------|--|
| 1  | 9820467 | Base cistern "closed", complete  |
| 2  | 9820040 | Assembly kit for Uni cistern   |
| 3  | 9820011 | Flush pipe with O-ring, length 269 mm, dry-wall construction                       |
| 4  | 9820015 | Flush pipe seal  |
| 5  | 9820071 | Clinch nut   |
| 6  | 9820348 | Toilet drain bend holder complete, mounting on cross-beam at bottom (from 04/2017) |
| 7  | 9820139 | Seal for drain bend DN 90  |
| 8  | 9820134 | Toilet drain bend DN 90 (PP)   |
| 9  | 9820136 | Toilet connector, DN 90/100, PP  |
| 10 | 9820072 | Foot brake   |
| 11 | 9820239 | Module foot made of plastic (1 pc.)  |
| 12 | 9820057 | Toilet connection set, DN 90   |
| 13 | 9820494 | By-pack  |
| 14 | 9240723 | TECEbase flush plate dual-flush, matt black  |

**TECEbase toilet set with Uni cistern, including TECEambia toilet flush plate in white, installation height 820 mm****Article number:** 9400411

**DU 1:** 1 pc.  
**DU 2:** 10 pc.  
**DU 3:** 60 pc.

**Description:**

Toilet module including “easy fit” flush plate installation. For single block assembly, as a pre-wall module in front of solid walls, and for incorporation into metal or wooden stud walls.

Uni cistern for front or top actuation:

- Safety tank made of impact-resistant plastic, tested to EN 14055
- Cistern fully pre-assembled and sealed.
- Cistern connection with outer thread R 1/2" at the side, compatible with quick adapters
- 10 litre tank volume; 6 litre pre-set standard flush volume, 4.5/7.5/9-litre flush volume can be set at any time; 3-litre partial flush volume for dual-flush system; remaining volume can be used for immediate cleaning flush.
- Insulated against condensation water
- “easy fit” flush plate installation
- Low-noise hydraulic filling valve, fitting group 1 according to DIN 4109

Module frame:

- Self-supporting, powder-coated
- Two M 12 retaining bolts and nuts
- Toilet drain bend DN 90 with joint adapter DN 90/100, made of PP
- Joint adapter also suitable for horizontal installation
- DN 90 toilet connection set including protective plug
- Mounting set for solid walls
- TECEambia dual-flush plate in white

**Please order separately:**

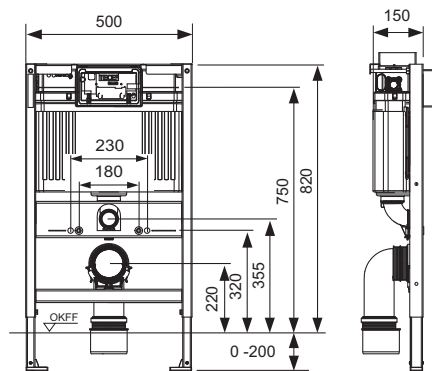
- TECE upgrade set dry-wall for TECE shower toilets (optional)

**Note:**

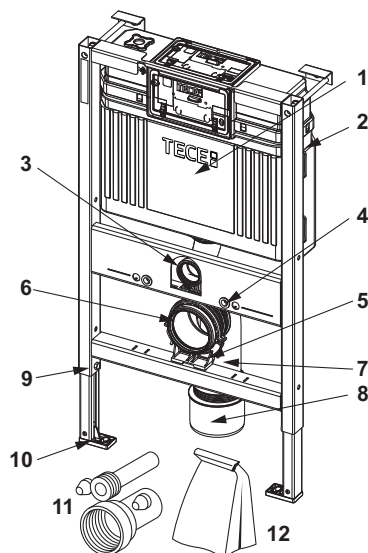
If toilet ceramics with a reduced supporting surface are used (= distance from middle of fixing bolt to lower edge of supporting surface is not larger than 18 cm) - e.g. V & B Memento, Sentique, Subway 2.0 - it is necessary to install the steel brace set 9041029 in the lower build space.

**Sales data:**

Product name:	TECEbase toilet set with Uni cistern, including TECEambia white toilet flush plate, installation height 820 mm
Commodity group:	910
Product group:	2009100010



## Spare parts:



- |    |         |  |
|----|---------|--|
| 1  | 9820100 | Uni cistern 820 mm   |
| 2  | 9820040 | Assembly kit for Uni cistern   |
| 3  | 9820015 | Flush pipe seal  |
| 4  | 9820071 | Clinch nut   |
| 5  | 9820348 | Toilet drain bend holder complete, mounting on cross-beam at bottom (from 04/2017) |
| 6  | 9820139 | Seal for drain bend DN 90  |
| 7  | 9820134 | Toilet drain bend DN 90 (PP)   |
| 8  | 9820136 | Toilet connector, DN 90/100, PP  |
| 9  | 9820072 | Foot brake   |
| 10 | 9820239 | Module foot made of plastic (1 pc.)  |
| 11 | 9820057 | Toilet connection set, DN 90   |
| 12 | 9820494 | By-pack  |

Sanitary Systems

# TECEbase 8cm DRY-WALL MODULES

Sanitary Modules

**TECEbase toilet module with Base 8 cistern, 8 cm, installation height 1120 mm****Article number:** 9400550**DU 1:** 1 pc.**DU 2:** 10 pc.**Description:**

Toilet module for single block assembly, installation depth 8 cm, suitable as a pre-wall module in front of solid walls and for installation in metal or wooden stud walls.

Base 8 cistern 8 cm for actuation from the front:

- Safety tank made of impact-resistant plastic, tested according to EN 14055
- Cistern completely pre-assembled
- Cistern connection with outer thread R 1/2" at the top, compatible with quick-action adapters
- 7 litre tank volume; 6 litre preset standard flush volume; 4.5 litre flush volume adjustable at any time; 3 litre partial flush with dual-flush system; setting of a 4/2 litre flush volume optionally possible.
- Insulated against condensation water
- For TECE flush plates and toilet flush handle
- Can be used as single or dual-flush cistern
- Low-noise hydraulic filling valve, acoustic group 1 in accordance with DIN 4109

Module frame:

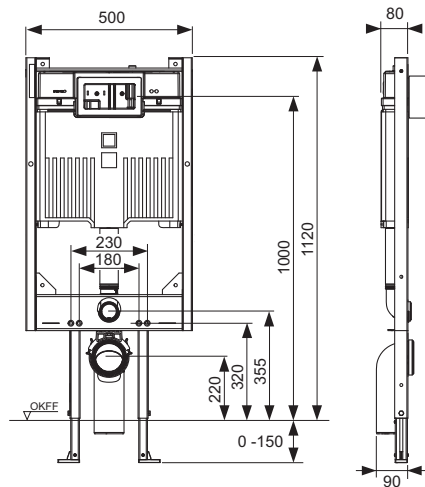
- Self-supporting, powder-coated
- Two M 12 retaining bolts and nuts
- Toilet drain bend DN 90/90 PE-HD, including building protection plug
- Toilet connection set DN 90
- Suitable for floor constructions up to 15 cm
- Ceramic installation spacing 180 or 230 mm

**Please order separately:**

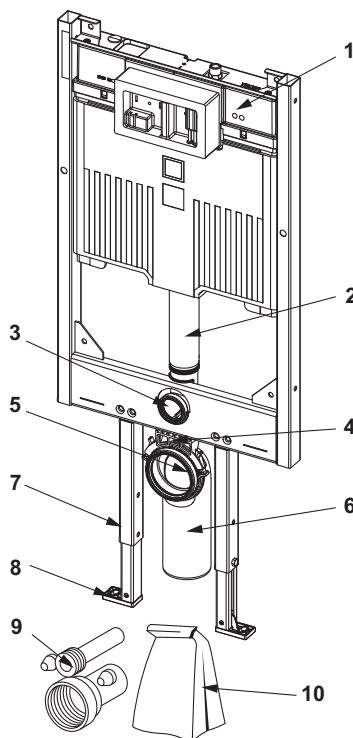
- Toilet flush plate (see flush plates)
- Fastening for pre-wall, corner or wooden post installation (optional)
- TECE dry-wall construction upgrade set for TECE shower toilets (optional)

**Sales data:**

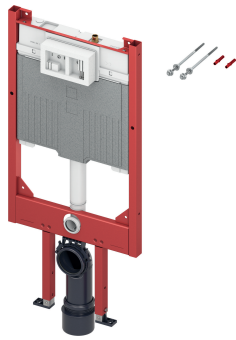
Product name:	TECEbase toilet module with Base 8 cistern, 8 cm installation height 1120 mm
Commodity group:	910
Product group:	2009100010



**Spare parts:**



- |    |         |  |
|----|---------|--|
| 1  | 9820665 | Base 8 cistern   |
| 2  | 9820668 | Flush pipe for cisterns  |
| 3  | 9820015 | Flush pipe seal  |
| 4  | 9820664 | Drain bend holder, depth-adjustable  |
| 5  | 9820139 | Seal for drain bend DN 90  |
| 6  | 9820150 | Toilet drain bend DN 90/90 PE-HD, for cisterns 8 cm                            |
| 7  | 9820072 | Foot brake   |
| 8  | 9820239 | Module foot made of plastic (1 pc.)  |
| 9  | 9820057 | Toilet connection set, DN 90   |
| 10 | 9820147 | By-pack for toilet module with Octa cistern, 8 cm<br>(mounting material, etc.) |

**TECEbase toilet module with Base 8 cistern, 8 cm, installation height 1120 mm****Article number:** 9400551**DU 1:** 1 pc.**DU 2:** 10 pc.**Description:**

Toilet module for single block assembly, installation depth 8 cm, suitable as a pre-wall module in front of solid walls and for installation in metal or wooden stud walls.

Base 8 cistern 8 cm for actuation from the front:

- Safety tank made of impact-resistant plastic, tested according to EN 14055
- Cistern completely pre-assembled
- Cistern connection with outer thread R 1/2" at the top, compatible with quick-action adapters
- 7 litre tank volume; 4.5 litre preset standard flush volume; 6 litre flush volume adjustable at any time; 3 litre partial flush with dual-flush system; setting of a 4/2 litre flush volume optionally possible.
- Insulated against condensation water
- For TECE flush plates and toilet flush handle
- Can be used as single or dual-flush cistern
- Low-noise hydraulic filling valve, acoustic group 1 in accordance with DIN 4109

Module frame:

- Self-supporting, powder-coated
- Two M 12 retaining bolts and nuts
- Toilet drain bend DN 90/90 PE-HD, including building protection plug
- Including joint adapter DN 90/100 made of PP
- Toilet connection set DN 90
- Suitable for floor constructions up to 15 cm
- Ceramic installation spacing 180 or 230 mm

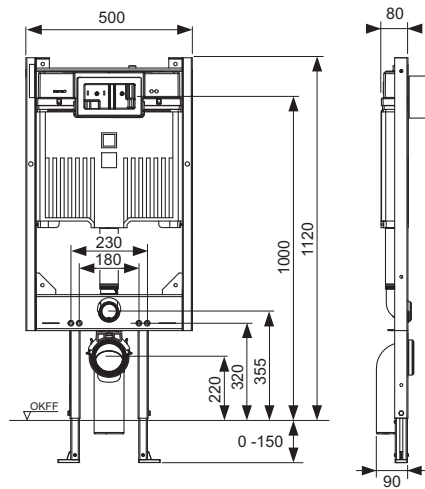
**Please order separately:**

- Toilet flush plate (see flush plates)
- Fastening for pre-wall, corner or wooden post installation (optional)
- TECE dry-wall construction upgrade set for TECE shower toilets (optional)

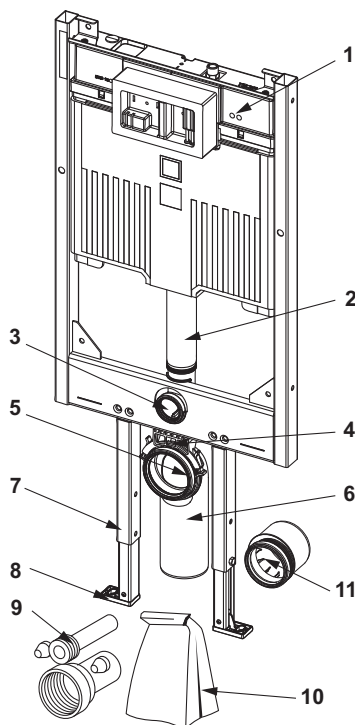
**Sales data:**

Product name: TECEbase toilet module with Base 8 cistern, 8 cm installation height 1120 mm  
Commodity group: 910  
Product group: 2009100010





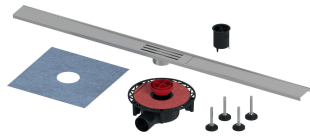
**Spare parts:**



- |    |         |  |
|----|---------|--|
| 1  | 9820665 | Base 8 cistern   |
| 2  | 9820668 | Flush pipe for cisterns  |
| 3  | 9820015 | Flush pipe seal  |
| 4  | 9820664 | Drain bend holder, depth-adjustable  |
| 5  | 9820139 | Seal for drain bend DN 90  |
| 6  | 9820150 | Toilet drain bend DN 90/90 PE-HD, for cisterns 8 cm                            |
| 7  | 9820072 | Foot brake   |
| 8  | 9820239 | Module foot made of plastic (1 pc.)  |
| 9  | 9820057 | Toilet connection set, DN 90   |
| 10 | 9820147 | By-pack for toilet module with Octa cistern, 8 cm<br>(mounting material, etc.) |
| 11 | 9820136 | Toilet connector, DN 90/100, PP  |

Drainage Systems

# TECElineo SHOWER CHANNELS

**TECElineo shower channel set, brushed stainless steel****Article number:** 15301100**Total length L:** 1000 mm**Colour:** Brushed stainless steel**Visible width****after installation:** 65 mm**Width in unfinished state:** 67 mm**DU 1:** 1 set**DU 2:** 32 set**Description:**

Shower channel for drainage, for installation in tile adhesive above the screed and composite seal.

Consisting of:

- Shower profile can be cut to length with internal slope to improve water drainage and self-cleaning effect
- Profile cover
- Drain with hinged flange for installation flush with the wall. Equipped with horizontal connection pipe for a DN 50 sewer line, including protective cap for construction and membrane odour trap
- Sealing collar for creating the composite seal
- Assembly feet for easy height alignment and position fixing during shell installation

Features:

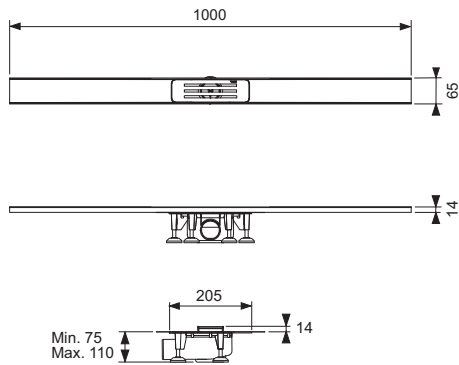
- Shower profile can be shortened to  $\geq 400$  mm
- Profile cover loadable according to load class K3 - test load 300 kg
- Shower profile and profile cover made of stainless steel material 1.4301 (304)
- for floor coverings of 8-18 mm (incl. adhesive bed)
- for installation flush with wall for wall coverings from 10 mm (incl. adhesive bed)
- for installation on the wall (flush with the wall) or at any distance from the wall
- min. Installation height 75 mm (lower edge of drain to upper edge of screed)
- Drainage capacity  $\geq 0.5/\geq 0.6$  l/s (according to EN 1253 at 10/20 mm accumulation above profile cover)
- Sealing water height > 22 mm
- Removable membrane odour trap

**Please order separately:**

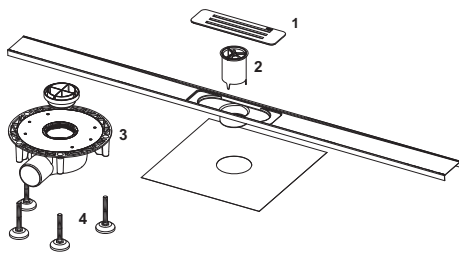
- Drainbase sound insulation mat (optional)

**Sales data:**

Product name: TECElineo shower channel set, brushed stainless steel, 1000 mm  
Commodity group: 691  
Product group: 3006910010



### Spare parts:



- |   |          |   |
|---|----------|---|
| 1 | 15390000 | Profile cover in stainless steel, brushed |
| 2 | 15390001 | Membrane odour trap                       |
| 3 | 15390002 | Drain trap                                |
| 4 | 15390003 | Assembly feet (4 units)                   |

Drainage Systems

# TECElinus SHOWER CHANNELS

**TECElinus shower channel set, flat, cover "2 in 1", with membrane odour trap****Article number:** 15103069**Nominal length:** 600 mm**Total length L:** 600 mm**Visible dim. after installation:** 540 mm**Width in unfinished state:** 135 mm**Visible width****after installation:** 75 mm**DU 1:** 1 pc.**DU 2:** 40 pc.**Description:**

Shower channel set for connecting to DN 50 drain pipes, for installing in screed, with adhesive flange and sealing sleeve to connect to composite seals, with reversible cover "2 in 1" (brushed stainless steel look or tileable).

Consisting of:

- Channel body with adhesive flange made of polished stainless steel, material 1.4301 (304)
- Central connection piece to connect the drain
- Drain DN 50 with lateral outlet connection piece, rotates 360°, 25 mm water seal height, drainage capacity 0.8 l/s (to EN 1253)
- TECEdrainline membrane odour trap (two-stage siphon effect through water seal and sealing lip membrane)
- Sealing sleeve that the customer can attach to the channel flange and for installation in the composite seal
- Assembly feet to adjust the height and fix the position of the channel, infinitely variable height adjustment up to 125 mm (lower edge of assembly feet to upper edge of channel)
- Reversible cover "2 in 1" for insertion into the channel body, made of stainless steel, durable to load class K3 - maximum test load 300 kg, for use either as brushed stainless steel cover or as tileable channel for attaching tiles on-site using elastic adhesive, e.g. silicon or epoxy resin adhesive

**Caution:**

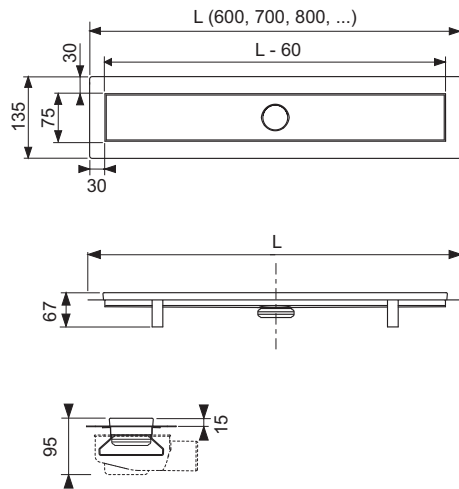
Check the adhesive to ensure tile compatibility!

**Please order separately:**

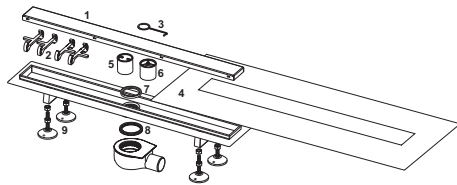
- Assembly adhesive for sealing collar (15120000)

**Sales data:**

Product name: TECElinus shower channel set, flat, cover "2 in 1", with membrane odour trap, 600 mm  
Commodity group: 645  
Product group: 3006450010



## Spare parts:



- |   |          |  |
|---|----------|--|
| 1 | 15190017 | Cover "2 in 1", 600 mm                                   |
| 2 | 668020   | Hollow feet, grey (from 08/2007)                         |
| 3 | 668014   | Lift tool  |
| 4 | 15190016 | Sealing sleeve, 600 mm                                   |
| 5 | 668010   | Immersion tube (H = 49 mm) for outlet flat               |
| 6 | 660016   | Membrane odour trap for "flat" drain                     |
| 7 | 668012   | Immersion pipe seal                                      |
| 8 | 668032   | Seal between channel and drain with grip claw, from 2015 |
| 9 | 15190009 | Assembly feet, 4 pc. as a set                            |

**TECElinus shower channel set, flat, cover "2 in 1", with membrane odour trap****Article number:** 15103079**Nominal length:** 700 mm**Total length L:** 700 mm**Visible dim. after installation:** 640 mm**Width in unfinished state:** 135 mm**Visible width****after installation:** 75 mm**DU 1:** 1 pc.**DU 2:** 40 pc.**Description:**

Shower channel set for connecting to DN 50 drain pipes, for installing in screed, with adhesive flange and sealing sleeve to connect to composite seals, with reversible cover "2 in 1" (brushed stainless steel look or tileable).

**Consisting of:**

- Channel body with adhesive flange made of polished stainless steel, material 1.4301 (304)
- Central connection piece to connect the drain
- Drain DN 50 with lateral outlet connection piece, rotates 360°, 25 mm water seal height, drainage capacity 0.8 l/s (to EN 1253)
- TECEdrainline membrane odour trap (two-stage siphon effect through water seal and sealing lip membrane)
- Sealing sleeve that the customer can attach to the channel flange and for installation in the composite seal
- Assembly feet to adjust the height and fix the position of the channel, infinitely variable height adjustment up to 125 mm (lower edge of assembly feet to upper edge of channel)
- Reversible cover "2 in 1" for insertion into the channel body, made of stainless steel, durable to load class K3 - maximum test load 300 kg, for use either as brushed stainless steel cover or as tileable channel for attaching tiles on-site using elastic adhesive, e.g. silicon or epoxy resin adhesive

**Caution:**

Check the adhesive to ensure tile compatibility!

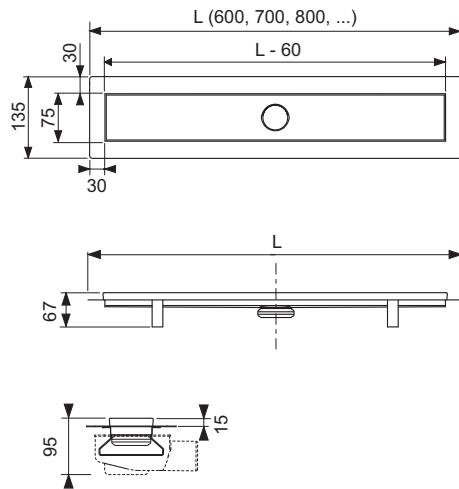
**Please order separately:**

- Assembly adhesive for sealing collar (15120000)

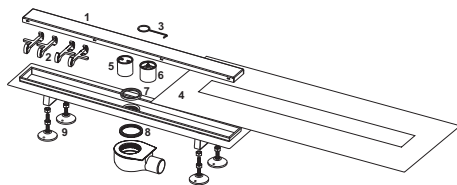
**Sales data:**

Product name: TECElinus shower channel set, flat, cover "2 in 1", with membrane odour trap, 700 mm  
Commodity group: 645  
Product group: 3006450010





## Spare parts:



- |   |          |  |
|---|----------|--|
| 1 | 15190010 | Cover "2 in 1", 700 mm                                   |
| 2 | 668020   | Hollow feet, grey (from 08/2007)                         |
| 3 | 668014   | Lift tool  |
| 4 | 15190000 | Sealing sleeve, 700 mm                                   |
| 5 | 668010   | Immersion tube (H = 49 mm) for outlet flat               |
| 6 | 660016   | Membrane odour trap for "flat" drain                     |
| 7 | 668012   | Immersion pipe seal                                      |
| 8 | 668032   | Seal between channel and drain with grip claw, from 2015 |
| 9 | 15190009 | Assembly feet, 4 pc. as a set                            |

**TECElinus shower channel set, flat, cover "2 in 1", with membrane odour trap****Article number:** 15103089**Nominal length:** 800 mm**Total length L:** 800 mm**Visible dim. after installation:** 740 mm**Width in unfinished state:** 135 mm**Visible width****after installation:** 75 mm**DU 1:** 1 pc.**DU 2:** 40 pc.**Description:**

Shower channel set for connecting to DN 50 drain pipes, for installing in screed, with adhesive flange and sealing sleeve to connect to composite seals, with reversible cover "2 in 1" (brushed stainless steel look or tileable).

**Consisting of:**

- Channel body with adhesive flange made of polished stainless steel, material 1.4301 (304)
- Central connection piece to connect the drain
- Drain DN 50 with lateral outlet connection piece, rotates 360°, 25 mm water seal height, drainage capacity 0.8 l/s (to EN 1253)
- TECEdrainline membrane odour trap (two-stage siphon effect through water seal and sealing lip membrane)
- Sealing sleeve that the customer can attach to the channel flange and for installation in the composite seal
- Assembly feet to adjust the height and fix the position of the channel, infinitely variable height adjustment up to 125 mm (lower edge of assembly feet to upper edge of channel)
- Reversible cover "2 in 1" for insertion into the channel body, made of stainless steel, durable to load class K3 - maximum test load 300 kg, for use either as brushed stainless steel cover or as tileable channel for attaching tiles on-site using elastic adhesive, e.g. silicon or epoxy resin adhesive

**Caution:**

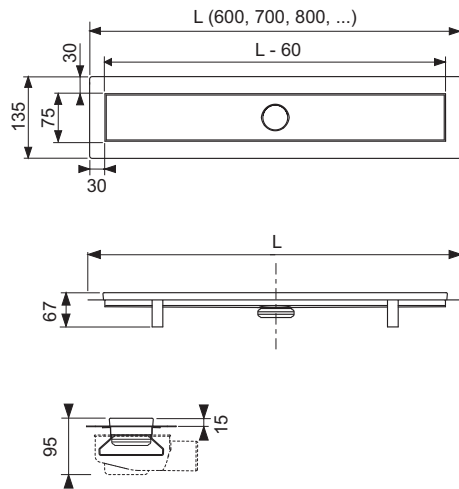
Check the adhesive to ensure tile compatibility!

**Please order separately:**

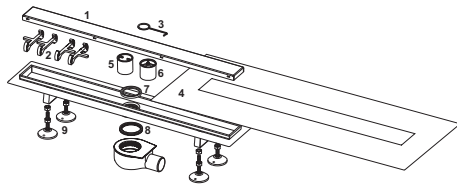
- Assembly adhesive for sealing collar (15120000)

**Sales data:**

Product name: TECElinus shower channel set, flat, cover "2 in 1", with membrane odour trap, 800 mm  
Commodity group: 645  
Product group: 3006450010



## Spare parts:



- |   |          |  |
|---|----------|--|
| 1 | 15190011 | Cover "2 in 1", 800 mm                                   |
| 2 | 668020   | Hollow feet, grey (from 08/2007)                         |
| 3 | 668014   | Lift tool  |
| 4 | 15190001 | Sealing sleeve, 800 mm                                   |
| 5 | 668010   | Immersion tube (H = 49 mm) for outlet flat               |
| 6 | 660016   | Membrane odour trap for "flat" drain                     |
| 7 | 668012   | Immersion pipe seal                                      |
| 8 | 668032   | Seal between channel and drain with grip claw, from 2015 |
| 9 | 15190009 | Assembly feet, 4 pc. as a set                            |

**TECElinus shower channel set, flat, cover "2 in 1", with membrane odour trap****Article number:** 15103099**Nominal length:** 900 mm**Total length L:** 900 mm**Visible dim. after installation:** 840 mm**Width in unfinished state:** 135 mm**Visible width****after installation:** 75 mm**DU 1:** 1 pc.**DU 2:** 40 pc.**Description:**

Shower channel set for connecting to DN 50 drain pipes, for installing in screed, with adhesive flange and sealing sleeve to connect to composite seals, with reversible cover "2 in 1" (brushed stainless steel look or tileable).

**Consisting of:**

- Channel body with adhesive flange made of polished stainless steel, material 1.4301 (304)
- Central connection piece to connect the drain
- Drain DN 50 with lateral outlet connection piece, rotates 360°, 25 mm water seal height, drainage capacity 0.8 l/s (to EN 1253)
- TECEdrainline membrane odour trap (two-stage siphon effect through water seal and sealing lip membrane)
- Sealing sleeve that the customer can attach to the channel flange and for installation in the composite seal
- Assembly feet to adjust the height and fix the position of the channel, infinitely variable height adjustment up to 125 mm (lower edge of assembly feet to upper edge of channel)
- Reversible cover "2 in 1" for insertion into the channel body, made of stainless steel, durable to load class K3 - maximum test load 300 kg, for use either as brushed stainless steel cover or as tileable channel for attaching tiles on-site using elastic adhesive, e.g. silicon or epoxy resin adhesive

**Caution:**

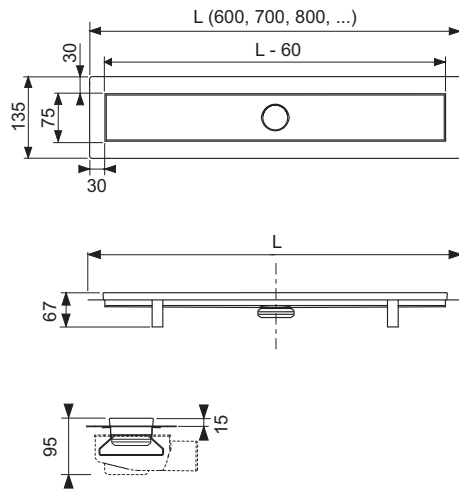
Check the adhesive to ensure tile compatibility!

**Please order separately:**

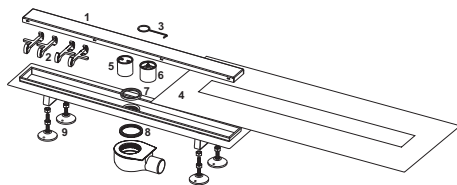
- Assembly adhesive for sealing collar (15120000)

**Sales data:**

Product name: TECElinus shower channel set, flat, cover "2 in 1", with membrane odour trap, 900 mm  
Commodity group: 645  
Product group: 3006450010



## Spare parts:



- |   |          |  |
|---|----------|--|
| 1 | 15190012 | Cover "2 in 1", 900 mm                                   |
| 2 | 668020   | Hollow feet, grey (from 08/2007)                         |
| 3 | 668014   | Lift tool  |
| 4 | 15190002 | Sealing sleeve, 900 mm                                   |
| 5 | 668010   | Immersion tube (H = 49 mm) for outlet flat               |
| 6 | 660016   | Membrane odour trap for "flat" drain                     |
| 7 | 668012   | Immersion pipe seal                                      |
| 8 | 668032   | Seal between channel and drain with grip claw, from 2015 |
| 9 | 15190009 | Assembly feet, 4 pc. as a set                            |

**TECElinus shower channel set, extra flat, "2 in 1" cover, with membrane odour trap****Article number:** 15106069**Nominal length:** 600 mm**Total length L:** 600 mm**Visible dim. after installation:** 540 mm**Width in unfinished state:** 135 mm**Visible width****after installation:** 75 mm**DU 1:** 1 pc.**DU 2:** 40 pc.**Description:**

Shower channel set for connecting to DN 40 drain pipes, for installing in screed, with adhesive flange and sealing collar to connect to composite seals, with reversible cover "2 in 1" (brushed stainless steel look or tileable).

Consisting of:

- Channel body with adhesive flange made of polished stainless steel, material 1.4301 (304)
- Central connection piece to connect the drain
- DN 40 super-flat drain with lateral outlet connection piece for swivelling installation on the channel body, 30 mm sealing water height, drainage capacity 0.6 l/s (in accordance with DIN EN 1253)
- TECEdrainline membrane odour trap (two-stage siphon effect through sealing water and membrane)
- Sealing collar that can be attached on site to the channel flange and for installation in the composite seal
- Assembly feet to adjust the height and fix the position of the channel, infinitely variable height adjustment up to 125 mm (lower edge of assembly feet to upper edge of channel)
- Reversible cover "2 in 1" for insertion into the channel body, made of stainless steel, loadable according to load class K3 - test load 300 kg, for use either as a brushed stainless steel cover or as a tileable channel for on-site bonding of tiles with elastic adhesive, e.g. silicone or epoxy resin adhesive

**Caution:**

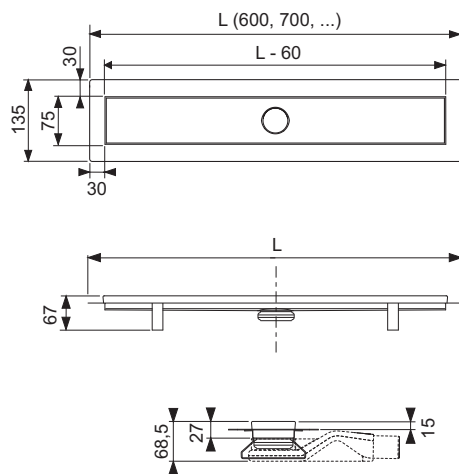
- Check the adhesive to ensure tile compatibility!
- Because of the low installation height, sufficient screed cover is not possible around the drain. Therefore only use large tiles and reinforcement to prevent cracks.
- Not suitable for wheelchairs

**Please order separately:**

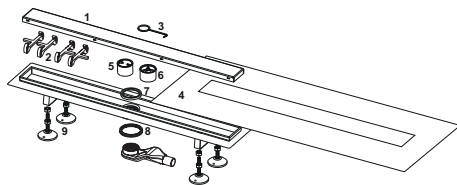
- Assembly adhesive for sealing collar (15120000)

**Sales data:**

Product name: TECElinus shower channel set, extra flat, "2 in 1" cover, with membrane odour trap, 600 mm  
Commodity group: 645  
Product group: 3006450010



## Spare parts:



- |   |          |  |
|---|----------|--|
| 1 | 15190017 | Cover "2 in 1", 600 mm                                   |
| 2 | 668020   | Hollow feet, grey (from 08/2007)                         |
| 3 | 668014   | Lift tool  |
| 4 | 15190016 | Sealing sleeve, 600 mm                                   |
| 5 | 668025   | Immersion tube (H = 25 mm) for extra-flat drain          |
| 6 | 660015   | Membrane odour trap for "extra-flat" drain               |
| 7 | 668012   | Immersion pipe seal                                      |
| 8 | 668032   | Seal between channel and drain with grip claw, from 2015 |
| 9 | 15190009 | Assembly feet, 4 pc. as a set                            |

**TECElinus shower channel set, extra flat, "2 in 1" cover, with membrane odour trap****Article number:** 15106079**Nominal length:** 700 mm**Total length L:** 700 mm**Visible dim. after installation:** 640 mm**Width in unfinished state:** 135 mm**Visible width****after installation:** 75 mm**DU 1:** 1 pc.**DU 2:** 40 pc.**Description:**

Shower channel set for connecting to DN 40 drain pipes, for installing in screed, with adhesive flange and sealing collar to connect to composite seals, with reversible cover "2 in 1" (brushed stainless steel look or tileable).

Consisting of:

- Channel body with adhesive flange made of polished stainless steel, material 1.4301 (304)
- Central connection piece to connect the drain
- DN 40 super-flat drain with lateral outlet connection piece for swivelling installation on the channel body, 30 mm sealing water height, drainage capacity 0.6 l/s (in accordance with DIN EN 1253)
- TECEdrainline membrane odour trap (two-stage siphon effect through sealing water and membrane)
- Sealing collar that can be attached on site to the channel flange and for installation in the composite seal
- Assembly feet to adjust the height and fix the position of the channel, infinitely variable height adjustment up to 125 mm (lower edge of assembly feet to upper edge of channel)
- Reversible cover "2 in 1" for insertion into the channel body, made of stainless steel, loadable according to load class K3 - test load 300 kg, for use either as a brushed stainless steel cover or as a tileable channel for on-site bonding of tiles with elastic adhesive, e.g. silicone or epoxy resin adhesive

**Caution:**

- Check the adhesive to ensure tile compatibility!
- Because of the low installation height, sufficient screed cover is not possible around the drain. Therefore only use large tiles and reinforcement to prevent cracks.
- Not suitable for wheelchairs

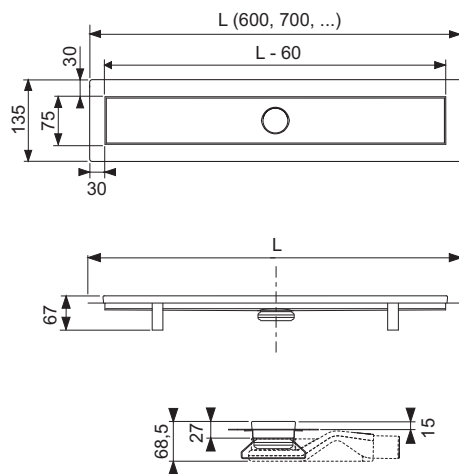
**Please order separately:**

- Assembly adhesive for sealing collar (15120000)

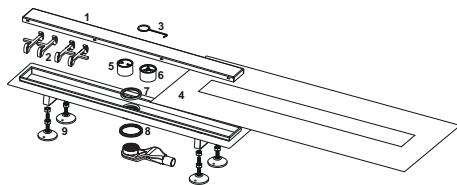
**Sales data:**

Product name: TECElinus shower channel set, extra flat, "2 in 1" cover, with membrane odour trap, 700 mm  
Commodity group: 645  
Product group: 3006450010





## Spare parts:



- |   |          |  |
|---|----------|--|
| 1 | 15190010 | Cover "2 in 1", 700 mm                                   |
| 2 | 668020   | Hollow feet, grey (from 08/2007)                         |
| 3 | 668014   | Lift tool  |
| 4 | 15190000 | Sealing sleeve, 700 mm                                   |
| 5 | 668025   | Immersion tube (H = 25 mm) for extra-flat drain          |
| 6 | 660015   | Membrane odour trap for "extra-flat" drain               |
| 7 | 668012   | Immersion pipe seal                                      |
| 8 | 668032   | Seal between channel and drain with grip claw, from 2015 |
| 9 | 15190009 | Assembly feet, 4 pc. as a set                            |

**TECElinus shower channel set, extra flat, "2 in 1" cover, with membrane odour trap****Article number:** 15106089**Nominal length:** 800 mm**Total length L:** 800 mm**Visible dim. after installation:** 740 mm**Width in unfinished state:** 135 mm**Visible width****after installation:** 75 mm**DU 1:** 1 pc.**DU 2:** 40 pc.**Description:**

Shower channel set for connecting to DN 40 drain pipes, for installing in screed, with adhesive flange and sealing collar to connect to composite seals, with reversible cover "2 in 1" (brushed stainless steel look or tileable).

**Consisting of:**

- Channel body with adhesive flange made of polished stainless steel, material 1.4301 (304)
- Central connection piece to connect the drain
- DN 40 super-flat drain with lateral outlet connection piece for swivelling installation on the channel body, 30 mm sealing water height, drainage capacity 0.6 l/s (in accordance with DIN EN 1253)
- TECEdrainline membrane odour trap (two-stage siphon effect through sealing water and membrane)
- Sealing collar that can be attached on site to the channel flange and for installation in the composite seal
- Assembly feet to adjust the height and fix the position of the channel, infinitely variable height adjustment up to 125 mm (lower edge of assembly feet to upper edge of channel)
- Reversible cover "2 in 1" for insertion into the channel body, made of stainless steel, loadable according to load class K3 - test load 300 kg, for use either as a brushed stainless steel cover or as a tileable channel for on-site bonding of tiles with elastic adhesive, e.g. silicone or epoxy resin adhesive

**Caution:**

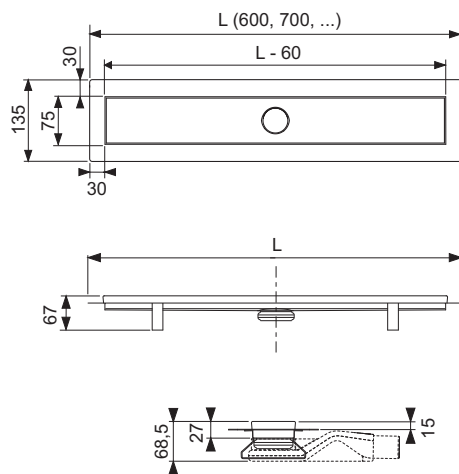
- Check the adhesive to ensure tile compatibility!
- Because of the low installation height, sufficient screed cover is not possible around the drain. Therefore only use large tiles and reinforcement to prevent cracks.
- Not suitable for wheelchairs

**Please order separately:**

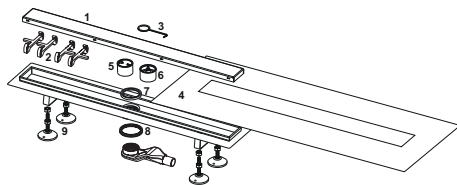
- Assembly adhesive for sealing collar (15120000)

**Sales data:**

Product name: TECElinus shower channel set, extra flat, "2 in 1" cover, with membrane odour trap, 800 mm  
Commodity group: 645  
Product group: 3006450010



## Spare parts:



- |   |          |  |
|---|----------|--|
| 1 | 15190011 | Cover "2 in 1", 800 mm                                   |
| 2 | 668020   | Hollow feet, grey (from 08/2007)                         |
| 3 | 668014   | Lift tool  |
| 4 | 15190001 | Sealing sleeve, 800 mm                                   |
| 5 | 668025   | Immersion tube (H = 25 mm) for extra-flat drain          |
| 6 | 660015   | Membrane odour trap for "extra-flat" drain               |
| 7 | 668012   | Immersion pipe seal                                      |
| 8 | 668032   | Seal between channel and drain with grip claw, from 2015 |
| 9 | 15190009 | Assembly feet, 4 pc. as a set                            |

**TECElinus shower channel set, extra flat, "2 in 1" cover, with membrane odour trap****Article number:** 15106099**Nominal length:** 900 mm**Total length L:** 900 mm**Visible dim. after installation:** 840 mm**Width in unfinished state:** 135 mm**Visible width****after installation:** 75 mm**DU 1:** 1 pc.**DU 2:** 40 pc.**Description:**

Shower channel set for connecting to DN 40 drain pipes, for installing in screed, with adhesive flange and sealing collar to connect to composite seals, with reversible cover "2 in 1" (brushed stainless steel look or tileable).

Consisting of:

- Channel body with adhesive flange made of polished stainless steel, material 1.4301 (304)
- Central connection piece to connect the drain
- DN 40 super-flat drain with lateral outlet connection piece for swivelling installation on the channel body, 30 mm sealing water height, drainage capacity 0.6 l/s (in accordance with DIN EN 1253)
- TECEdrainline membrane odour trap (two-stage siphon effect through sealing water and membrane)
- Sealing collar that can be attached on site to the channel flange and for installation in the composite seal
- Assembly feet to adjust the height and fix the position of the channel, infinitely variable height adjustment up to 125 mm (lower edge of assembly feet to upper edge of channel)
- Reversible cover "2 in 1" for insertion into the channel body, made of stainless steel, loadable according to load class K3 - test load 300 kg, for use either as a brushed stainless steel cover or as a tileable channel for on-site bonding of tiles with elastic adhesive, e.g. silicone or epoxy resin adhesive

**Caution:**

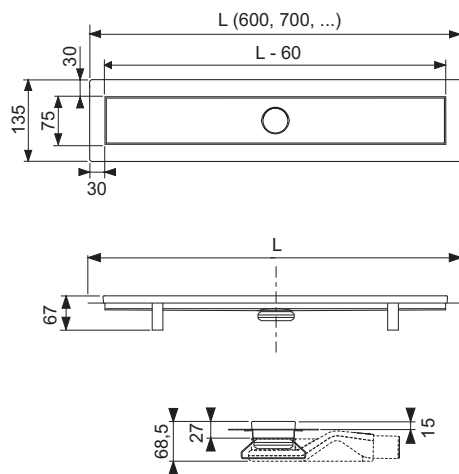
- Check the adhesive to ensure tile compatibility!
- Because of the low installation height, sufficient screed cover is not possible around the drain. Therefore only use large tiles and reinforcement to prevent cracks.
- Not suitable for wheelchairs

**Please order separately:**

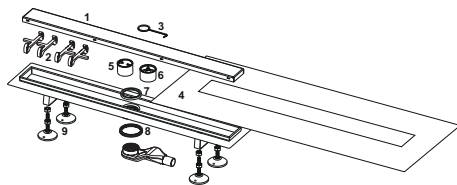
- Assembly adhesive for sealing collar (15120000)

**Sales data:**

Product name: TECElinus shower channel set, extra flat, "2 in 1" cover, with membrane odour trap, 900 mm  
Commodity group: 645  
Product group: 3006450010



## Spare parts:



- |   |          |  |
|---|----------|--|
| 1 | 15190012 | Cover "2 in 1", 900 mm                                   |
| 2 | 668020   | Hollow feet, grey (from 08/2007)                         |
| 3 | 668014   | Lift tool  |
| 4 | 15190002 | Sealing sleeve, 900 mm                                   |
| 5 | 668025   | Immersion tube (H = 25 mm) for extra-flat drain          |
| 6 | 660015   | Membrane odour trap for "extra-flat" drain               |
| 7 | 668012   | Immersion pipe seal                                      |
| 8 | 668032   | Seal between channel and drain with grip claw, from 2015 |
| 9 | 15190009 | Assembly feet, 4 pc. as a set                            |

Drainage Systems

# TECEshowerline SHOWER CHANNELS

Product Range 2025

**TECE** 

TECEshowerline



**TECEshowerline shower channel set**

Article number: 15201070

Nominal length: 700 mm

Total length L: 652 mm

Visible width

after installation: 652 mm

Width in unfinished state: 73 mm

DU 1: 1 pc.

**Description:**

Straight stainless steel channel body for installation in the screed, for connection to a vertical drainage line DN 50.

Consisting of:

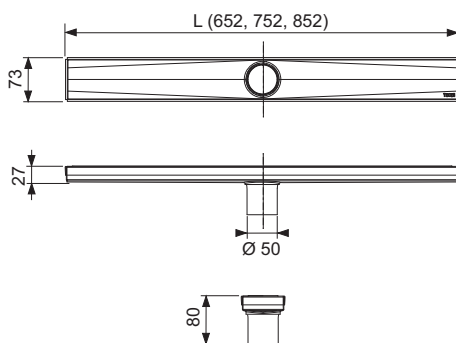
- Channel body made of polished stainless steel, material 1.4301 (304)
- Reversible cover "2 in 1"
- Central channel support
- Odour trap and vermin barrier (pluggable)
- internal gradient for improved water drainage and self-cleaning effect

**Sales data:**

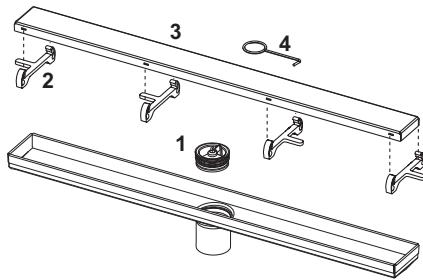
Product name: TECEshowerline shower channel set, 700 mm

Commodity group: 690

Product group: 3006900020





**Spare parts:**

- |   |          |                                  |
|---|----------|----------------------------------|
| 1 | 15221000 | Mechanical odour trap            |
| 2 | 668020   | Hollow feet, grey (from 08/2007) |
| 3 | 15243071 | Cover "2 in 1", 700 mm           |
| 4 | 668014   | Lift tool                        |

**TECEshowerline shower channel set**

Article number: 15201080

Nominal length: 800 mm

Total length L: 752 mm

Visible width

after installation: 752 mm

Width in unfinished state: 73 mm

DU 1: 1 pc.

**Description:**

Straight stainless steel channel body for installation in the screed, for connection to a vertical drainage line DN 50.

Consisting of:

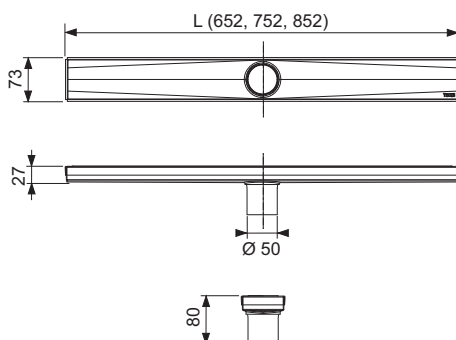
- Channel body made of polished stainless steel, material 1.4301 (304)
- Reversible cover "2 in 1"
- Central channel support
- Odour trap and vermin barrier (pluggable)
- internal gradient for improved water drainage and self-cleaning effect

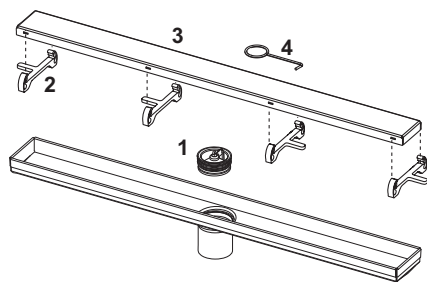
**Sales data:**

Product name: TECEshowerline shower channel set, 800 mm

Commodity group: 690

Product group: 3006900020



**Spare parts:**

- |   |          |                                  |
|---|----------|----------------------------------|
| 1 | 15221000 | Mechanical odour trap            |
| 2 | 668020   | Hollow feet, grey (from 08/2007) |
| 3 | 15243081 | Cover "2 in 1", 800 mm           |
| 4 | 668014   | Lift tool                        |

**TECEshowerline shower channel set**

Article number: 15201090

Nominal length: 900 mm

Total length L: 852 mm

Visible width

after installation: 852 mm

Width in unfinished state: 73 mm

DU 1: 1 pc.

**Description:**

Straight stainless steel channel body for installation in the screed, for connection to a vertical drainage line DN 50.

Consisting of:

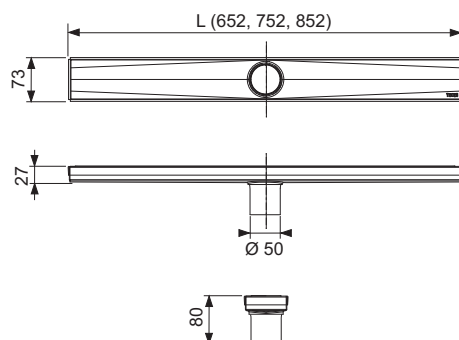
- Channel body made of polished stainless steel, material 1.4301 (304)
- Reversible cover "2 in 1"
- Central channel support
- Odour trap and vermin barrier (pluggable)
- internal gradient for improved water drainage and self-cleaning effect

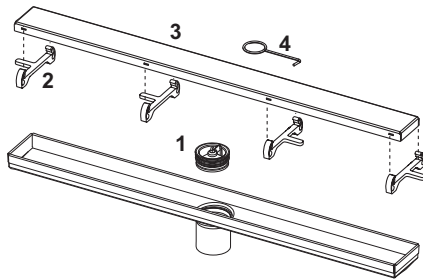
**Sales data:**

Product name: TECEshowerline shower channel set, 900 mm

Commodity group: 690

Product group: 3006900020



**Spare parts:**

- |   |          |                                  |
|---|----------|----------------------------------|
| 1 | 15221000 | Mechanical odour trap            |
| 2 | 668020   | Hollow feet, grey (from 08/2007) |
| 3 | 15243091 | Cover "2 in 1", 900 mm           |
| 4 | 668014   | Lift tool                        |

**TECeshowerline shower channel for natural stone, straight, with stainless steel support as a set****Article number:** 15201072**Nominal length:** 700 mm**Total length L:** 735 mm**Support sheet****length L - 89:** 646 mm**Covering cut-out****length L - 87:** 648 mm**Visible width****after installation:** 626 mm**Width in unfinished state:** 152 mm**DU 1:** 1 pc.**Description:**

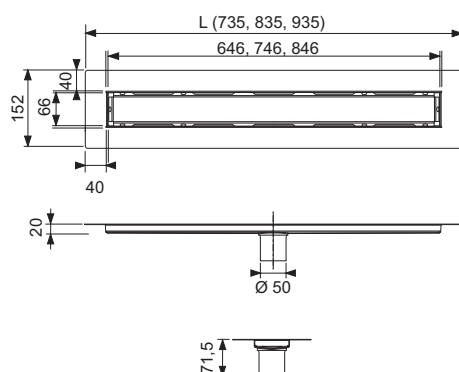
Straight channel body and support sheet for TECeshowerline shower channel, for installation in the screed, laying by the customer of large tiles/natural stone slabs, with flange for connection to a vertical drainage line DN 50.

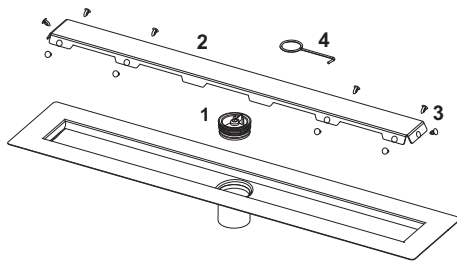
Consisting of:

- Channel body with flange made of polished stainless steel, material 1.4301 (304)
- Central channel support
- Odour trap and vermin barrier (pluggable)
- Internal incline for improved water drainage and self-cleaning effect
- Support sheet made of stainless steel – material 1.4301 (304) – for fitting in the channel body

**Sales data:**

Product name: TECeshowerline shower channel for natural stone, straight, with stainless steel support as a set, 700 mm  
Commodity group: 690  
Product group: 3006900020



**Spare parts:**

- |   |          |   |
|---|----------|---|
| 1 | 15221000 | Mechanical odour trap                             |
| 2 | 668026   | Support sheet shower channel natural stone 700 mm |
| 3 | 668016   | Spacer clip                                       |
| 4 | 668014   | Lift tool   |



### TECeshowerline shower channel for natural stone, straight, with stainless steel support as a set

Article number: 15201082

Nominal length: 800 mm

Total length L: 835 mm

Support sheet

length L - 89: 746 mm

Covering cut-out

length L - 87: 748 mm

Visible width

after installation: 726 mm

Width in unfinished state: 152 mm

DU 1: 1 pc.

#### Description:

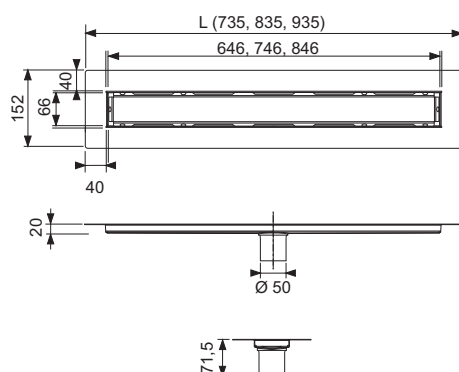
Straight channel body and support sheet for TECeshowerline shower channel, for installation in the screed, laying by the customer of large tiles/natural stone slabs, with flange for connection to a vertical drainage line DN 50.

Consisting of:

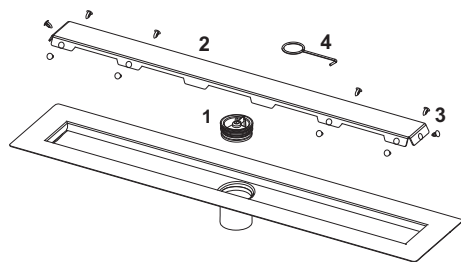
- Channel body with flange made of polished stainless steel, material 1.4301 (304)
- Central channel support
- Odour trap and vermin barrier (pluggable)
- Internal incline for improved water drainage and self-cleaning effect
- Support sheet made of stainless steel – material 1.4301 (304) – for fitting in the channel body

#### Sales data:

Product name: TECeshowerline shower channel for natural stone, straight, with stainless steel support as a set, 800 mm  
 Commodity group: 690  
 Product group: 3006900020





**Spare parts:**

- |   |          |   |
|---|----------|---|
| 1 | 15221000 | Mechanical odour trap                             |
| 2 | 668027   | Support sheet shower channel natural stone 800 mm |
| 3 | 668016   | Spacer clip                                       |
| 4 | 668014   | Lift tool   |

**TECeshowerline shower channel for natural stone, straight, with stainless steel support as a set****Article number:** 15201092**Nominal length:** 900 mm**Total length L:** 935 mm**Support sheet****length L - 89:** 846 mm**Covering cut-out****length L - 87:** 848 mm**Visible width****after installation:** 826 mm**Width in unfinished state:** 152 mm**DU 1:** 1 pc.**Description:**

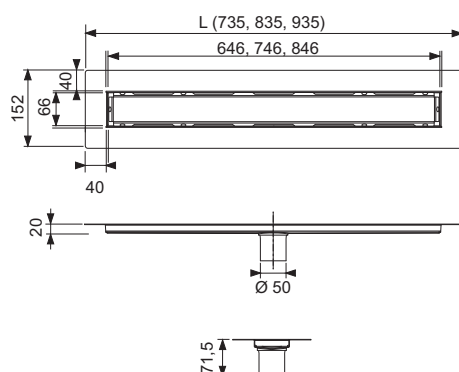
Straight channel body and support sheet for TECeshowerline shower channel, for installation in the screed, laying by the customer of large tiles/natural stone slabs, with flange for connection to a vertical drainage line DN 50.

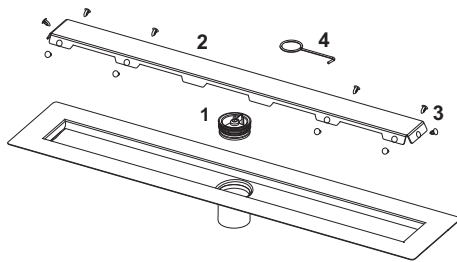
Consisting of:

- Channel body with flange made of polished stainless steel, material 1.4301 (304)
- Central channel support
- Odour trap and vermin barrier (pluggable)
- Internal incline for improved water drainage and self-cleaning effect
- Support sheet made of stainless steel – material 1.4301 (304) – for fitting in the channel body

**Sales data:**

Product name: TECeshowerline shower channel for natural stone, straight, with stainless steel support as a set, 900 mm  
Commodity group: 690  
Product group: 3006900020



**Spare parts:**

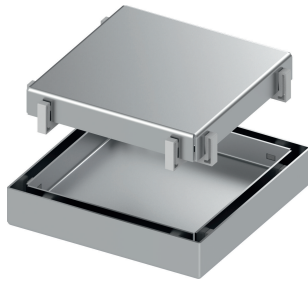
- |   |          |   |
|---|----------|---|
| 1 | 15221000 | Mechanical odour trap                             |
| 2 | 668028   | Support sheet shower channel natural stone 900 mm |
| 3 | 668016   | Spacer clip                                       |
| 4 | 668014   | Lift tool   |

Drainage Systems

# TECEshowerpoint

TECEshowerpoint



**TECEshowerpoint drain set 100 mm, cover "2 in 1", without flange**

Article number: 15204001

DU 1: 1 set

**Description:**

Floor drain set 100 x 100 mm without flange.

Consisting of:

- Top made of stainless steel 1.4301 (304) for installation in the screed for direct installation on a DN 50 waste water pipe
- Reversible cover "2 in 1" (stainless steel surface or tileable)
- Membrane odour trap
- Hair trap

External dimension of attachment (without flange): 100 x 100 mm

Internal dimensions of grate for tile: 86 x 86 mm

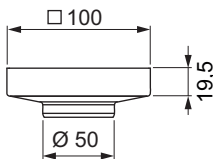
Outer diameter spigot: 50 mm

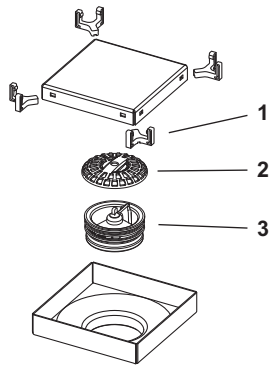
**Caution:**

Not compatible with other TECEdrainpoint S products.

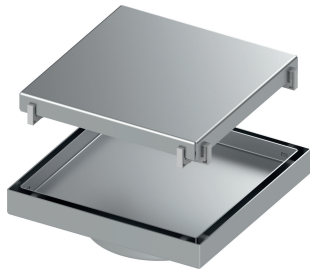
**Sales data:**

Product name: TECEshowerpoint drain set 100 mm, cover "2 in 1", without flange  
Commodity group: 692  
Product group: 3006920010



**Spare parts:**

- |   |          |                                   |
|---|----------|-----------------------------------|
| 1 | 15294000 | Moulded feet for cover (4 pieces) |
| 2 | 15294001 | Hair trap for 100 mm              |
| 3 | 15294002 | Membrane odour trap for 100 mm    |

**TECEshowerpoint drain set 150 mm, cover "2 in 1", without flange**

Article number: 15204003

DU 1: 1 set

**Description:**

Floor drain set 150 x 150 mm without flange.

Consisting of:

- Top made of stainless steel 1.4301 (304) for installation in the screed for direct installation on a DN 100 waste water pipe
- Reversible cover "2 in 1" (stainless steel surface or tileable)
- Membrane odour trap
- Hair trap

External dimension of attachment (without flange): 150 x 150 mm

Internal dimensions of grate for tile: 136 x 136 mm

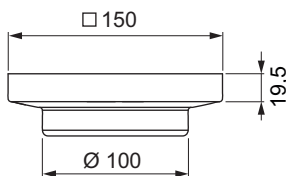
Outer diameter spigot: 100 mm

**Caution:**

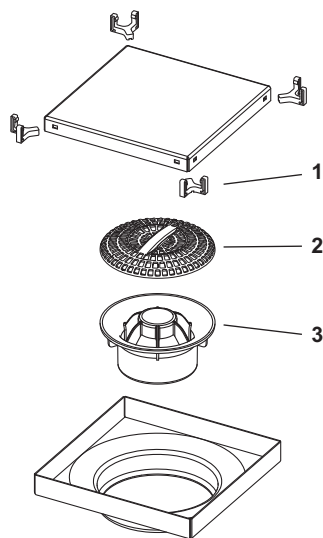
Not compatible with other TECEdrainpoint S products.

**Sales data:**

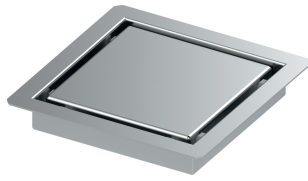
Product name:	TECEshowerpoint drain set 150 mm, cover "2 in 1", without flange
Commodity group:	692
Product group:	3006920010





**Spare parts:**

- |   |          |                                   |
|---|----------|-----------------------------------|
| 1 | 15294000 | Moulded feet for cover (4 pieces) |
| 2 | 3690005  | Hair trap                         |
| 3 | 15294003 | Membrane odour trap for 150 mm    |

**TECEshowerpoint drain set 100 mm for natural stone, with flange**

Article number: 15204002

DU 1: 1 set

**Description:**

Floor drain set 100 x 100 mm with flange.

Consisting of:

- Top made of stainless steel 1.4301 (304) for installation in the screed for direct installation on a DN 50 waste water pipe
- Tileable stainless steel grate
- Membrane odour trap
- Hair trap

External dimension of attachment (with flange): 122 x 122 mm

Outer dimensions of grate for natural stone: 88 x 88 mm

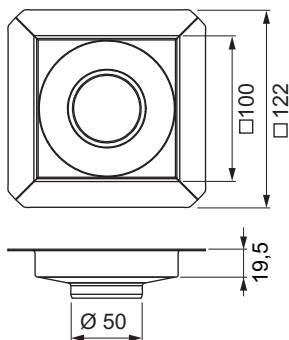
Outer diameter spigot: 50 mm

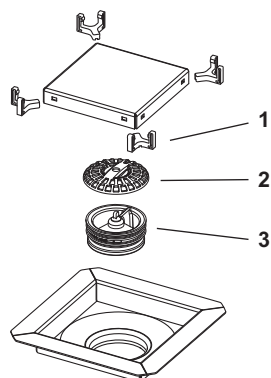
**Caution:**

Not compatible with other TECEdrainpoint S products.

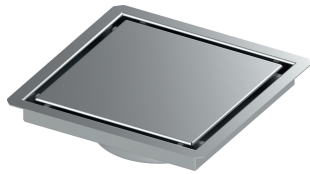
**Sales data:**

Product name:	TECEshowerpoint drain set 100 mm for natural stone, with flange
Commodity group:	692
Product group:	3006920010



**Spare parts:**

- |   |          |                                   |
|---|----------|-----------------------------------|
| 1 | 15294000 | Moulded feet for cover (4 pieces) |
| 2 | 15294001 | Hair trap for 100 mm              |
| 3 | 15294002 | Membrane odour trap for 100 mm    |

**TECEshowerpoint drain set 150 mm for natural stone, with flange**

Article number: 15204004

DU 1: 1 set

**Description:**

Floor drain set 150 x 150 mm with flange.

Consisting of:

- Top made of stainless steel 1.4301 (304) for installation in the screed for direct installation on a DN 100 waste water pipe
- Tileable stainless steel grate
- Membrane odour trap
- Hair trap

External dimension of attachment (with flange): 172 x 172 mm

Outer dimensions of grate for natural stone: 138 x 138 mm

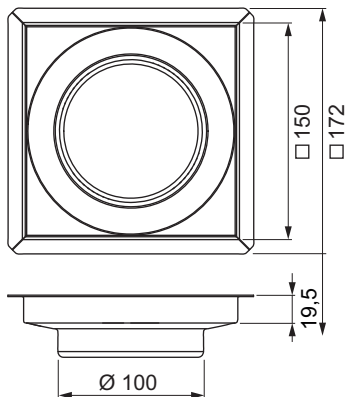
Outer diameter spigot: 100 mm

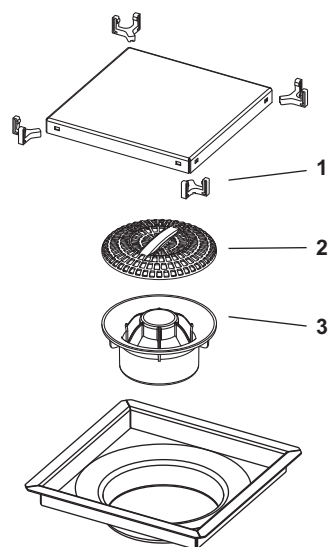
**Caution:**

Not compatible with other TECEdrainpoint S products.

**Sales data:**

Product name:	TECEshowerpoint drain set 150 mm for natural stone, with flange
Commodity group:	692
Product group:	3006920010



**Spare parts:**

- |   |          |                                   |
|---|----------|-----------------------------------|
| 1 | 15294000 | Moulded feet for cover (4 pieces) |
| 2 | 3690005  | Hair trap                         |
| 3 | 15294003 | Membrane odour trap for 150 mm    |



**TECEshowerpoint grate frame stainless steel, 150 mm, design "plate"**

Article number: 3660013

DU 1: 1 pc.

**Description:**

Set consisting of drain top with stainless steel grate frame and tileable recess "plate", 142 x 142 mm to mount directly to a DN 100 mm drain pipe.

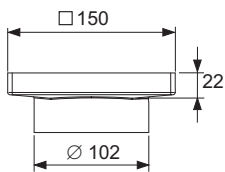
- Grate frame outer dimensions = 149 x 149 mm
- Outlet outer diameter = 102 mm
- Grate frame height (inserted) = 23 mm
- Inner height of tileable insert = 10.5 mm
- Grate frame made of drawn stainless steel, material 1.4301 (304)
- Tileable channel plate made of stainless steel, material 1.4301 (304), dimensions 142 x 142 mm, polished surface, load class K3 (load up to 300 kg)

**Caution:**

Not compatible with other TECEdrainpoint S products.

**Sales data:**

Product name:	TECEshowerpoint grate frame stainless steel, 150 mm, design "plate"
Commodity group:	607
Product group:	3006070030



**TECEshowerpoint grate frame stainless steel, 150 mm, frameless tile base**

Article number: 3660014

DU 1: 1 pc.

**Description:**

Set consisting of stainless steel top with frameless tile support, 150 x 150 mm to mount directly to a DN 100 mm drain pipe.

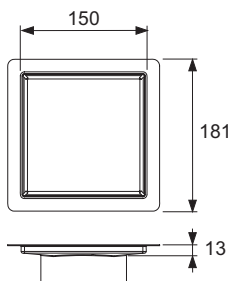
- Outer diameter = 102 mm
- Height = 2 mm (suitable for all tile/natural stone thicknesses)
- Grate frame made of drawn stainless steel
- Frameless tile base made of stainless steel, dimensions 134 x 134 mm, polished surface

**Caution:**

Not compatible with other TECEdrainpoint S products.

**Sales data:**

Product name:	TECEshowerpoint grate frame stainless steel, 150 mm, frameless tile base
Commodity group:	607
Product group:	3006070030





**Notes:**

- Goods are supplied to the specialist wholesale trade only in the quantities specified.
- Subject to technical modifications.
- This documentation is based on our current state of knowledge; the “state of the art” applies as a matter of course.
- Local standards and guidelines are to be taken into consideration in the choice of materials.

Valid until the appearance of the next issue. Subject to alterations and errors excepted.

# General Conditions of Sale and Delivery and General Contractual Conditions of the Company TECE GmbH, Hollefeldstr. 57, 48282 Emsdetten/Germany

## 1. Applicability of the Conditions

- 1.1 The deliveries, services and offers of TECE GmbH, Hollefeldstr. 57, 48282 Emsdetten, hereinafter briefly referred to as TECE, shall be based exclusively on these terms and conditions. The latter shall therefore also apply to all future business relationships even if not explicitly agreed upon once again. At the latest on receipt of the goods/services, these conditions shall be deemed accepted. Any acknowledgements of the purchaser with reference to his own conditions of business or purchase are hereby objected to.
- 1.2 Deviations from these terms and conditions shall only be effective if explicitly confirmed in writing by TECE.
- 1.3 The following general terms and conditions of sale and delivery apply to our business relationships with our customers. Customers in the sense of these terms and conditions can be both consumers and entrepreneurs. The customer is a consumer, insofar as the purpose of the ordered deliveries and services is not predominantly commercial or independent professional activity can be attributed. In contrast, an entrepreneur is any natural or legal person or person with legal capacity partnership that, when concluding the contract, is exercising its commercial or independent professional activity acts including legal entities under public law and special funds under public law within the meaning of Section 310 (1) BGB.

## 2. Offer and Contract Conclusion

- 2.1 Where the order is to be qualified as an offer pursuant to § 145 BGB, TECE shall be entitled to accept this offer within 4 weeks.
- 2.2 TECE reserves proprietary rights and copyrights with respect to images, drawings, calculations, data and other documents. These must not be made accessible to third parties. This shall also apply to information, especially written documents, which is marked as confidential. Prior to passing on such information to third parties, the purchaser shall require explicit written consent from TECE.
- 2.3 Drawings, images, measures, weights and other performance data shall only be binding if that has been explicitly agreed in writing. Such information shall not be understood as a guarantee of quality.

## 3. Application-technological Advice

- 3.1 Application-technological advice such as installation instructions, standard operating procedures and the creation and calculation of measurements etc. will be provided by TECE to the best of its knowledge. Any data and information regarding the suitability and use of TECE goods shall not exempt the customer from his obligation to carry out own inspections and tests as to whether the products are suitable for the intended processes and purposes; such information shall be non-binding and, as a matter of principle, not give rise to any contractual legal relationship and any ancillary obligations under the delivery contract, unless explicitly agreed otherwise in writing. To such exceptional cases, the following subsections 3.2 and 3.3 shall apply.
- 3.2 For application-technological advice, TECE shall only be liable in cases of wilful misconduct and gross negligence. This shall apply without restrictions to advisory activities relating to the application/use of new product developments. In other cases, TECE shall also be liable for simple negligence, albeit only where essential contractual obligations are infringed. Any liability for lost profits, for damage/loss resulting from third-party claims against the customer and for other consequential damage shall be ruled out.
- 3.3 Unless TECE is charged with a wilful breach of contract, the liability for damages shall be limited, apart from that, to the foreseeable, typically occurring damage.

## 4. Period of Delivery and Performance, Delay

- 4.1 The delivery period indicated by TECE shall only begin to run once all technical matters/issues have been clarified.
- 4.2 The dates and periods mentioned by TECE shall be non-binding unless explicitly agreed otherwise in writing. As a matter of principle, risks of procurement will not be assumed by TECE.
- 4.3 Delays of delivery and performance due to force majeure and/or because of events, which make the delivery essentially more difficult or impossible for TECE (such as strike, lockout etc.), shall entitle TECE to postpone the deliveries or services by the duration of the hindrance plus an appropriate preparatory period. The same shall apply correspondingly if the aforementioned hindrances have occurred at suppliers of TECE or their sub-suppliers.
- 4.4 Correct and timely self-supply shall remain reserved.
- 4.5 Where TECE has failed to provide a due service in accordance with the contract, the purchaser shall not be entitled to withdraw from the contract and/or demand compensation for damages instead of the entire performance or the reimbursement of futile expenses as far as TECE's breach of duty is insignificant.
- 4.6 TECE shall come in default only as a consequence of a reminder unless something else results from the law or the contract. To become effective, reminders submitted and deadlines set by the purchaser shall require written form.
- 4.7 Compliance with delivery obligations on the part of TECE shall require timely and proper performance of the purchaser's obligations. The defence of non-performance of the contract shall remain reserved. TECE shall be entitled to partial delivery and partial performance at any time.
- 4.8 As far as TECE fails to provide a due service or fails to provide such a service in line with what is owed, the purchaser shall be entitled to withdraw from the contract and, subject to the culpable infringement of a contractual obligation on the part of TECE, to demand compensation for damages instead of performance or the reimbursement of futile expenses without prejudice to the additional prerequisites under the following subsections. Another prerequisite shall be that the purchaser has set an appropriate period of time for performance or subsequent performance and that this period of time has expired unsuccessfully.
- 4.9 The purchaser shall be under obligation to link the period of grace pursuant to Subsection 4.8 above with the explicit statement that, after unsuccessful expiry of the period of grace, he will reject delivery and assert the rights arising against TECE from Subsection 4.8 above.
- 4.10 Where performance has already been provided partially, the purchaser shall only be entitled to demand compensation for damages instead of the entire performance as far as his interest in the entire performance requires so. Withdrawal from the entire contract shall only be possible in this event as far as the purchaser is able to prove that he has no interest in any partial performance.
- 4.11 Where TECE comes in default because of reasons, for which TECE is responsible, the liability for damages shall be ruled out in cases of ordinary negligence. The aforementioned limitation of liability shall not apply if the delay results from TECE's culpable infringement of an essential contractual obligation. In this event, the liability of TECE shall be limited, pursuant to Subsection 4.13 below, to the foreseeable damage typical of this kind of contract. In the event of any wilful infringement of the contract, for which TECE is responsible, TECE shall be liable according to the statutory provisions. More far-reaching compensation claims of the purchaser shall be ruled out in all cases of delayed delivery including after expiry of a period of grace possibly set to TECE. This shall not apply as far as compulsory liability is in place because of wilful misconduct, gross negligence and bodily injury; this shall not be associated with any change of the burden of proof to the disadvantage of the purchaser.
- 4.12 In the event of delayed acceptance by the purchaser or in the event of infringement of other obligations to cooperate by the purchaser, TECE shall have the right to assert the legal claims, to which TECE is entitled. The risk of accidental loss and/or accidental deterioration of the object of purchase shall be transferred to the purchaser no later than at the point in time, at which the purchaser comes in default of acceptance.
- 4.13 Where TECE comes in default, the purchaser shall be entitled – if he provides conclusive evidence that he has suffered damage as a result of such default – to demand compensation of 0.5 % at the most for each full week of delay in case of simple negligence without prejudice to the limitation of liability under Subsection 4.11 above. Overall, however, he shall not be entitled to demand more than 10 % of the price for that part of the delivery which the purchaser could not put into useful operation because of the delay.

## 5. Transfer of Risk, Packaging

- 5.1 Unless otherwise agreed, delivery ex stock from TECE in Emsdetten shall be agreed. The risk will be transferred to the purchaser as soon as the shipment has been handed over to the person executing transportation or has left the TECE warehouse for shipping purposes. This shall also apply if TECE carries out the transportation by means of own personnel.
- 5.2 If shipping becomes impossible through no fault of TECE, the risk will be transferred to the purchaser as soon as the delivery is reported as ready for shipment.
- 5.3 If the purchaser wishes, TECE will cover the delivery through goods in transit insurance. The costs incurred in this respect shall be borne by the purchaser.
- 5.4 The transport packaging and any other packaging pursuant to the German Packaging Regulation shall not be taken back, except for repeatedly usable means of transport such as pallets, lattice boxes, pressure cylinders etc. The purchaser shall be under obligation to arrange for the disposal of non-returnable packaging at his own expense. The repeatedly usable means of transport will be made available to the purchaser only by way of lending. The purchaser shall be under obligation to return them in proper condition, i.e. completely emptied and without damage. In case of contamination or damage of the means of transport, the purchaser shall bear the cost of repair or provide TECE with compensation for lost value if repair is impossible.

## 6. Prices and Payments

- 6.1 The prices indicated in the respective current price lists of TECE plus the respectively applicable statutory value-added tax shall be relevant. Additional deliveries and services shall be invoiced separately.
- 6.2 Unless otherwise agreed, the prices shall be prices ex stock of TECE in Emsdetten including normal packaging.
- 6.3 Unless explicitly agreed otherwise, the amount invoiced shall be due without any deductions 30 days after the date of issue of the invoice.
- 6.4 Where the purchaser comes in default of payment, TECE shall be entitled to assert the rights arising under § 288 BGB (German Civil Code).
- 6.5 The purchaser shall only be entitled to rights of setoff if his counterclaims have been finally established, are undisputed or have been acknowledged by TECE. Moreover, he shall only be entitled to exercise a right of retention insofar as his counterclaim is based on the same contractual relationship.
- 6.6 Where TECE is aware of circumstances calling the purchaser's creditworthiness into question, TECE shall be entitled to demand advance payments or security deposits without prejudice to more far-reaching legal claims.
- 6.7 Cheques and bills of exchange, in respect of which TECE reserves acceptance, shall only be considered as payment following redemption. Possible discount and bank charges shall be at the expense of the purchaser.
- 6.8 The goods shall be delivered in accordance with these terms and conditions subject to the reservation of proprietary rights. As far as TECE agrees with the purchaser on payment of the purchase price debt via the cheque/bill of exchange procedure, the reservation of proprietary rights shall also extend to the purchaser's redemption of the bill of exchange accepted by TECE and not expire through credit entry of the received bill of exchange.

## 7. Warranty

- 7.1 The warranty rights of the purchaser shall require that the purchaser has properly met his obligations to perform an inspection and raise a complaint as owed under § 377 HGB (German Commercial Code).
- 7.2 The legal rights of recourse of the purchaser against TECE shall only be in place insofar as the purchaser has not reached any agreement with his customer that goes beyond the legal rights to claim damages for defects.
- 7.3.1 As far as the object of purchase shows a defect, for which TECE is responsible, TECE shall first be given the opportunity for subsequent performance within appropriate periods of time. TECE shall be entitled, at its own choice, to remedy the defects or make replacement delivery.
- 7.3.2 If subsequent performance fails, the purchaser shall be entitled – without prejudice to possible claims for damages – to withdraw from the contract or reduce the purchase price. Claims of the purchaser regarding the expenses required for subsequent performance, especially transportation costs, infrastructure costs, labour costs and costs of materials, shall be ruled out insofar as such expenses increase because the object of delivery was subsequently taken to a place other than the place of performance, unless taking the object there is part of its intended use.
- 7.4.1 Claims for damages because of defects shall not be in place in case of only insignificant deviations from the agreed quality, in case of an only insignificant impairment of usability, in the event of natural wear and tear and/or in case of damage having occurred after the transfer of risk due to inaccurate or negligent handling, excessive exposure, unsuitable operating devices and/or which arise because of particular external influences and/or are not stipulated in the contract.
- 7.4.2 If the operation and/or maintenance instructions given by TECE are not adhered to, inadmissible changes are made to the products, parts are exchanged and/or consumable materials are used, which do not comply with the original specifications, the liability of TECE for material defects shall cease to apply, unless the warranty case is verifiably not attributable to one of the aforementioned reasons for exclusion.
- 7.5 Claims because of material defects shall come under the statute of limitations in 12 months. This period shall begin running upon the transfer of risk. The aforementioned provisions shall not apply if the law stipulates longer periods pursuant to BGB §§ 438 Subsection 1 no. 2 (objects for buildings), 479 Subsection 1 (Right of Recourse) and 634 a (Constructional Defects).
- 7.6.1 Unless otherwise agreed hereafter, more far-reaching claims of the purchaser – on whatever legal grounds – shall be ruled out. Therefore, TECE shall not be liable for damage not having been caused to the delivery item itself; in particular, TECE shall not be liable for lost profits or other financial damage suffered by the purchaser.
- 7.6.2 If TECE infringes a cardinal obligation or essential contractual obligation through negligence, the liability to pay damages of TECE shall be limited to the sum insured of the product liability insurance, amounting to EUR 1.5 million. As far as the insurance does not provide cover, TECE shall be under obligation to provide compensation itself. On request, TECE is ready to let the purchaser inspect this policy. TECE undertakes to maintain the insurance until expiry of the warranty obligation subject to these conditions.
- 7.6.3 The aforementioned exclusions of liability shall not apply if the damage is attributable to wilful misconduct or gross negligence. Moreover, they shall not apply either to cases of bodily injury and/or damage to health and to cases, in which the purchaser asserts claims for damages due to a guarantee having been assumed for the existence of a certain quality/property, unless the purpose of the quality/property guarantee only extends to compliance of the underlying delivery with the provisions of the contract, but not to the risk of consequential damage caused by a defect. The aforementioned regulations are not associated with any change of the burden of proof to the disadvantage of the purchaser.
- 7.7 Payments made by TECE without explicit reason are a gesture of goodwill.

## 8. Joint and Several Liability

- 8.1 Any liability for damages going beyond what is stated in Section 7 shall be ruled out – without respect of the legal nature of the asserted claim – especially as far as the infringement of obligations under a non-contractual relationship and through an impermissible act is concerned.
- 8.2 The exclusion of liability pursuant to Subsection 8.1 above shall not apply to claims under the German Product Liability Act and in cases of damage to life, body or health.
- 8.3 As far as TECE's liability is ruled out or restricted, this shall also apply to the personal liability of employees, staff members, personnel, representatives and auxiliary persons of TECE.
- 8.4 The customer expressly warrants that he/she is entitled to publish and duplicate the texts and motifs. In particular, the customer hereby gives assurance that he/she will uphold all data-protection and privacy rights of all parties concerned. The customer shall not transmit any data whose content infringes any third-party rights (in particular those relating to competition or copyright law), or which violates existing laws or good morals. The customer hereby assumes full liability and exempts TECE from all third-party claims, in particular those relating to competition or copyright law. If claims are asserted against TECE, TECE shall also be indemnified against the legal costs necessary for its legal defence.

## 9. Reservation of Proprietary Rights

- 9.1 The goods delivered shall remain property of TECE until complete payment of all accounts receivable relating to the business relationship between TECE and the purchaser has been made. The inclusion of individual accounts receivable in a current invoice and the acknowledgement of the respective account balance shall not affect the reservation of proprietary rights. Only receipt of the equivalent amount by TECE shall be considered as payment.
- 9.2 If the purchaser acts in a manner contrary to contract, especially in the event of delayed payment, TECE shall be entitled to take back the object of purchase. The fact that TECE takes back the object of purchase shall not constitute withdrawal from the contract unless this is stated explicitly and in writing by TECE.
- 9.3 A seizure of the object of purchase by TECE shall always constitute withdrawal from the contract. After TECE has taken back the object of purchase, TECE shall be entitled to its commercialisation. The proceeds of commercialisation less reasonable costs of commercialisation shall be set off against the purchaser's account payable.
- 9.4 The purchaser shall be under obligation to handle the object of purchase with care. In particular, he shall be under obligation to sufficiently insure the object of purchase, according to its replacement value and at his own expense, against damage caused by fire, water and theft. Where maintenance and inspection works are required, the purchaser will have to carry out these works in due time at his own expense.
- 9.5 In the event of seizure or any other intervention by third parties, TECE shall be notified in writing without delay, so that TECE will be able to bring legal action pursuant to § 771 ZPO (Code of Civil Procedure). As far as the third party is unable to reimburse the judicial and extrajudicial costs of a lawsuit pursuant to § 771 ZPO to TECE, the purchaser shall be liable for the resulting loss.
- 9.6 The purchaser shall be entitled to resell the goods being subject to the reservation of proprietary rights in the framework of his regular course of business. However, he already now cedes to TECE all accounts receivable, which he acquires against his customers or third parties as a result of the resale, up to the final invoice amount (including value-added tax) of the accounts receivable, to which TECE is entitled. The cession shall be made regardless of whether the object of purchase has been resold without processing or after processing. TECE accepts the cession. If the ceded receivable against the acquirer of the goods being subject to the reservation of proprietary rights has been included in a current invoice (current account), the cession shall also refer to the acknowledged account balance and, in case of the respective customer's insolvency, to the "causal account balance" being in place in this event. In spite of the cession, the purchaser shall be entitled to collect this receivable. The authority of TECE to collect the receivable itself shall remain unaffected. However, TECE undertakes not to collect the receivable as long as the purchaser meets his payment obligations relating to the collected proceeds, as long as he is not in default of payment and, in particular, as long as no application for the opening of insolvency proceedings has been filed or no cessation of payments has occurred. Where this is the case, however, TECE shall be entitled to demand from the purchaser to notify TECE of the ceded accounts receivable and their respective debtors, provide any information necessary for collection, hand over the related documents and notify the debtors (third parties) of the cession.

- 9.7 Processing or alteration of the goods subject to the reservation of proprietary rights by the purchaser shall always be done on behalf of TECE. If the goods subject to the reservation of proprietary rights are processed together with other objects not belonging to TECE, TECE shall acquire co-ownership of the new object in accordance with the proportion between the value of the goods subject to the reservation of proprietary rights (final invoice amount including VAT) and the value of the other processed objects at the time of processing. Apart from that, the same regulations shall apply to the object having resulted from such processing activities as are applicable to the goods delivered subject to reservations.
- 9.8 If the goods subject to the reservation of proprietary rights are combined inseparably with other objects not belonging to TECE, TECE shall acquire co-ownership of the new object in accordance with the proportion between the value of the goods subject to the reservation of proprietary rights (final invoice amount including VAT) and the value of the other, combined objects at the time of such combination. If the combination is done in such a way that the object of the purchaser is to be regarded as the main object, it shall be considered as agreed that the purchaser transfers proportionate co-ownership to TECE. The purchaser shall store the resulting sole or joint property for TECE.
- 9.9 TECE undertakes to release the securities, to which TECE is entitled, on request from the purchaser insofar as the marketable value of the securities, to which TECE is entitled, exceeds the accounts receivable to be covered by more than 10 %. The securities to be released shall be selected by TECE.

## 10. Applicable Law, Place of Jurisdiction, Partial Voidness

- 10.1 For all current and future claims under the business relationship with contractors, legal entities under public law and special funds under public law including cheque receivables and bill of exchange-related receivables, the exclusive place of jurisdiction shall be the registered office of TECE in Emsdetten. However, TECE shall also be entitled to sue the purchaser at the court responsible for the purchaser's place of domicile.
- 10.2 Unless otherwise stated in the order confirmation, the registered office of TECE in Emsdetten shall be the place of performance.
- 10.3 These terms and conditions and all legal relationships between TECE and the purchaser shall be subject to the law of the Federal Republic of Germany. Any applicability of the U.N. Convention of 11 April 1980 on Contracts for the International Sale of Goods (Federal Gazette 1989 II p. 588, adjusted 1990 II, 1699) shall be ruled out.

Emsdetten/Germany, July 2023

TECE GmbH, Hollefeldstr. 57, 48282 Emsdetten  
Limited liability company, Local Court Steinfurt / Germany, HRB no. 7461  
Managing Directors: Hans-Joachim Sahlmann, Peter Fehlings, André Welle, Dr. Michael Freitag

More information on  
[www.tece.com](http://www.tece.com)

**TECE GmbH**  
P +49 2572 928-999  
[international-business@tece.de](mailto:international-business@tece.de)  
[www.tece.com](http://www.tece.com)